

TOTO

Global reference catalogue

Vol.1

<http://asia.toto.com>

Global reference catalogue

TOTO

TOTO

Contents

ASIA

Anantara Eastern Mangroves Hotel & Spa UAE	03
Conrad Hotels & Resort Dubai UAE	07
Four Seasons Hotel Mumbai India	11
The Oberoi Mumbai Hotel India	15
JW Marriott Hotel Vietnam	19
The Okura Prestige Bangkok Hotel Thailand	23
Le Méridien Bangkok Hotel Thailand	25
Hilton Sukhumvit Bangkok Hotel Thailand	27
Le Méridien Taipei Taiwan	29
The Okura Prestige Taipei Taiwan	33
Waldorf Astoria Shanghai On The Bund China	37
Four Seasons Hotel Pudong China	41
Banyan Tree Chongqing Beibei China	45
Kempinski Hotel Yixing China	49
Lakeville Regency China	53
Marinella Hong Kong	57
Karuzawa Villa Japan	61
Chikusenso Japan	65

EUROPE

Park Hyatt Paris-Vendôme Hotel France	69
May Fair Hotel, London United Kingdom	71
Hotel Connaught, London United Kingdom	73
Mandarin Oriental, Munich Germany	75
Lotte Hotel Moscow Russia	77
Hotel Sanssouci Vienna Austria	81
Jal Lounge, Frankfurt Airport Germany	83
Chugai Pharma, London United Kingdom	85
Franziskus Hospital, Bielefeld Germany	87

NORTH / SOUTH AMERICA

Halekulani USA	89
-------------------	----

Anantara Eastern Mangroves Hotel & Spa

UAE

Majestically set on the waterfront, Eastern Mangroves Hotel & Spa by Anantara is a natural haven on the cusp of urban life. Forming part of an integrated hotel, marina, retail and residential destination, its unique location offers guests an exceptional Abu Dhabi experience. The exotic beauty of the region's precious mangroves provides the perfect backdrop for the rich cultural traditions embodied in the hotel's impressive architecture. Discover luxury accommodation definitive of urban Emirati life, yet filled with natural charm at Eastern Mangroves by Anantara.





Details
 Country/Area UAE
 Category Hotel&Resort
 Opened 2012
 Owner TDIC
 Interior designer PIA Thailand and AK Design Dubai
 Rooms 222
 Product number CW822J and BW822NJ
 Toilet FBY1710CPE
 Bathtub L620K
 Lavatory TX119LEL, TX447SEL
 Faucet TX469SEL, TX721AES, TX472SESM
 Shower
 Web <http://abu-dhabi.anantara.com/>

Wander through the majestic halls and corridors, a breathtaking showcase of Arabian design, with grand central passageways and arched ceilings. An inviting sanctuary blissfully sheltered from the hustle and bustle of the city centre. Choose from over 200 rooms at this picturesque hotel in Abu Dhabi, all decorated in a comfortable yet chic style and boasting lavish cultural touches. Enjoy the freshest and finest cuisine at Paychaylen or relax for a drink at Impressions, complemented by views across the mangroves. Rejuvenate your senses at the incomparable Anantara Spa. Energise at the state-of-the-art gym and then relax poolside under the shade of a gazebo. For business or leisure, Eastern Mangroves provides a backdrop ripe with serenity and elegance.



Conrad Hotels & Resort Dubai

UAE

Conrad Dubai offers discreet modern elegance in the heart of Dubai's financial and shopping district where guests can discover superb business and leisure amenities at one of the world's favourite luxury destinations.



Details	UAE
Country/Area	Hotel *****
Category	2013
Opened	555
Rooms	Hilton Worldwide
Owner	
Product number	CW822J/816pcs, CW875NJ/116pcs
Toilet	UFS800CK/68pcs
Lavatory	L530K/1114pcs, LW587J/93pcs
Bathtub	FBY1610PE/501pcs

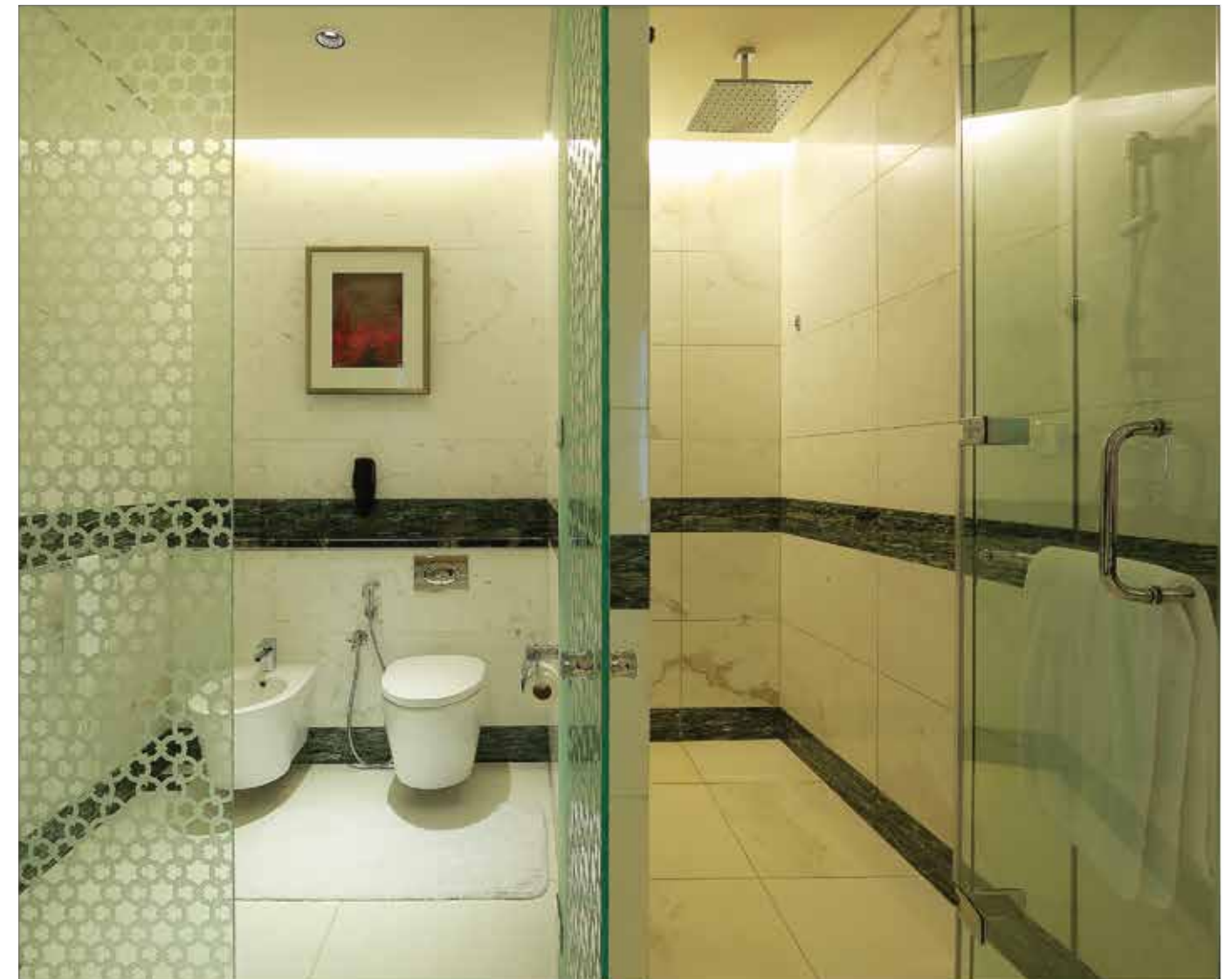




Guests will be entertained by top-class recreational facilities such as a spa, steamroom, massage, outdoor pool, fitness center, family room, meeting facilities, and concierge. The exquisite cuisine and contemporary restaurants are also available at Conrad Dubai. Step into the inviting rooms and escape the stresses of the day with a wide range of amenities such as TOTO's toilets, lavatories, bathtubs and so on.



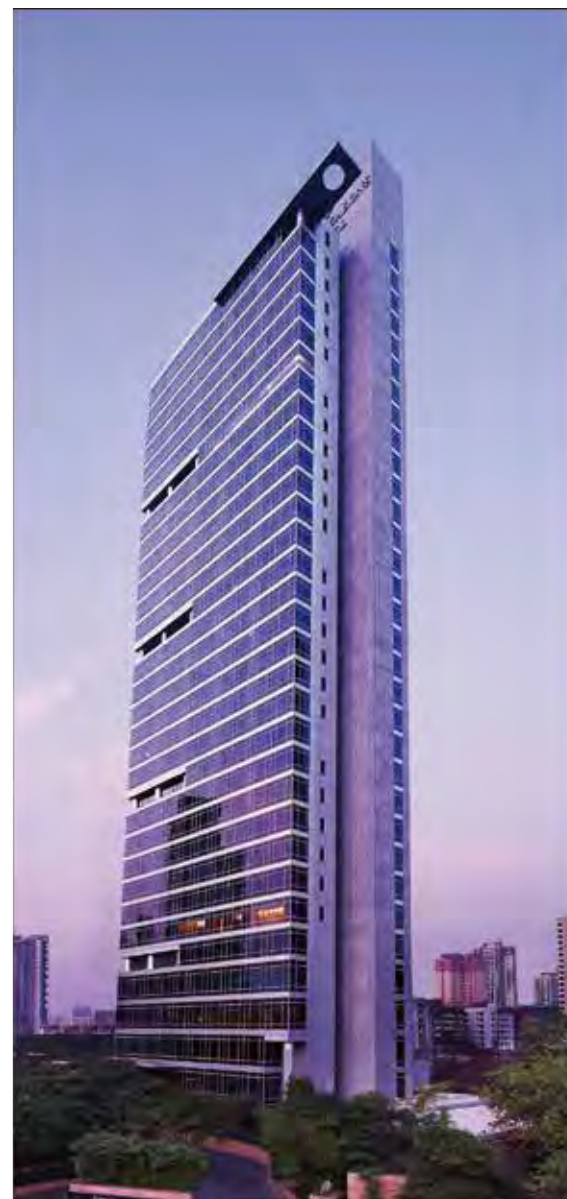
All the contemporary guest rooms and suites boast supreme comfort, the latest technology and breathtaking views of the Arabian Gulf or the magical city of Dubai. The modern luxury can be enjoyed at the Conrad Dubai.



Four Seasons Hotel Mumbai

INDIA

Experience the best of Mumbai from your base at this sleek icon of Indian hospitality. Enjoy spacious accommodations at Four Seasons Hotel Mumbai, many with views of the Arabian Sea and unrivalled service that anticipates your every business and leisure need. In addition, Aer, the crowning glory, covers the entire rooftop of Four Seasons Hotel Mumbai creating an atmosphere that redefines the notion of freedom. See the breath-taking views of the sea and feel the lights of Mumbai spread out like a blanket beneath you.



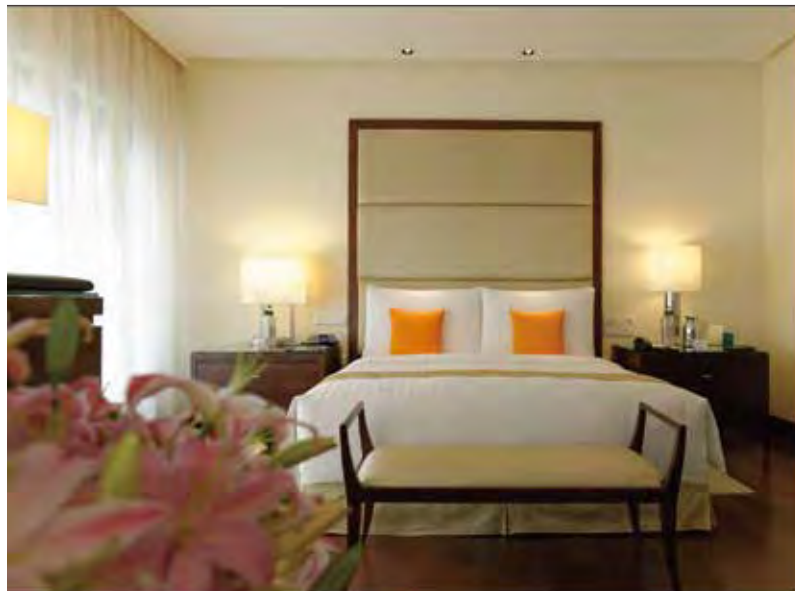
Details	
Country/Area	INDIA
Hotel Category	Hotel *****
Opened	2008
Interior designer	BilkeyLlinas Design
Hotel Owner	Four Seasons Hotel Mumbai - a division of Magus Estates and Hotels Pvt. Ltd
Product number	
Products W.C	CW823J
Toilet (Bidet)	BW820J
Bidet Mixer	TX303BES (Ego 2)
Lavatory	LW540J
Faucet	TX119LECK7 (EGO 2 Cross Handle),TX448SEL (5 Hole Bath and Shower set)
Bathtub	FBY1764CPV (1720 X 900) Cast IronFree standing bath tub/ with appron. TX491S,THX118SESM
Shower	
Thermostatic Diverter with SMA	TX442SES
Paper Holder	TX703AES+ TX722AES
Web	http://www.fourseasons.com/Mumbai



The Hotel's 202 rooms, suites, restaurants such as San Qi (three energies) and cafe Prato attract a loyal following. Like the rest of the Hotel, The Spa showcases the best of modern Mumbai – world-class facilities set in stylish surroundings, underpinned by a strong core of traditional values. In addition, The Mansion, an avant-garde, residential style of banqueting and meeting facility, offers a unique vantage point with 25,000 square feet of classic and contemporary luxury space with direct access from the portecochère. Accented with modern facilities and state-of-the-art technology, it provides unrivalled intimacy and focus for your event. Designed by renowned Japanese designer, Yasuhiro Koichi of SPIN, it provides versatile indoor and outdoor spaces to compliment every style of event. Located in Mumbai's emerging financial and commercial district of Worli, it is easily accessible from both North and South.



The Oberoi
Mumbai Hotel
INDIA





Details
 Country/Area INDIA
 Category Hotel *****
 Opened 1986
 Rooms 287
 Interior designer Mr Patki
 Owner TCC Luxury Hotels & Resorts PCL
 Product number CS991TU/TCF9911A (Neorest EX)
 NEOREST LW645J
 Lavatory FBY1760CHPWV10/FBE1764CE
 Bathub TX118LECK7, TX445SECMV3N
 Faucet THX118SEMN
 Shower
 Thermostatic
 Diverter with SMA TX473SESV1
 Web www.oberoihotels.com

Situated in the heart of the city's business, financial and entertainment districts, The Oberoi Mumbai is minutes away from the city's many tourist attractions and offers a panoramic view of the expansive ocean and city skyline. The soaring, fourteen-level atrium and pristine white marble floors offer a fitting introduction to the contemporary interiors, which are perfectly offset by traditional Indian aesthetics. The 287 guestrooms include 73 suites- the largest number in the city. Meticulously appointed and equipped with the latest technology, each room is carefully designed to be a luxurious haven for relaxation and well-being.



JW Marriott Hotel

VIETNAM



Designed by Carlos Zapata Studio, this hotel is inspired by the country's magnificent coastline that evokes the characteristic of a dragon. The 'reverse skyscraper' of the JW Marriott Hanoi is a new breathtaking luxury hotel in Vietnam. With 445 rooms including 39,348 square-meter luxury guestrooms and 52 suites, 6 restaurants and bar outlets, this is a venue that sets no limit to your expectations.



Details
 Country/Area VIETNAM
 Category Hotel *****
 Opened 2013
 Architecture design Carlos Zapata
 Interior design Peter Silling & Associates
 Rooms 445
 Owner Bitexco Vietnam Group
 Product number PKZ1800A/FRR220BR (presidential suite)
 Products NEOREST CW822J/TC393VS/WH013R/MB004CP
 Toilet (deluxe suite)
 Lavatory LW991A (presidential suite)
 Shower TMC95V101R (presidential suite)
 Web jwmarriottHanoi.com



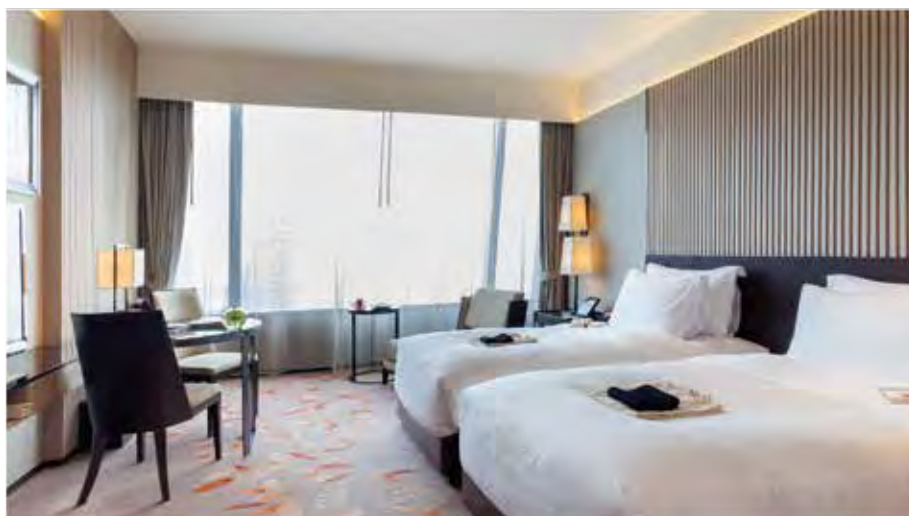
The majority of bathrooms inside JW Marriott Hanoi are equipped with TOTO products. The most luxurious room in the hotel, The Presidential Suite, is equipped with the TOTO Neorest series, including the Neorest bath, lavatories and showers.



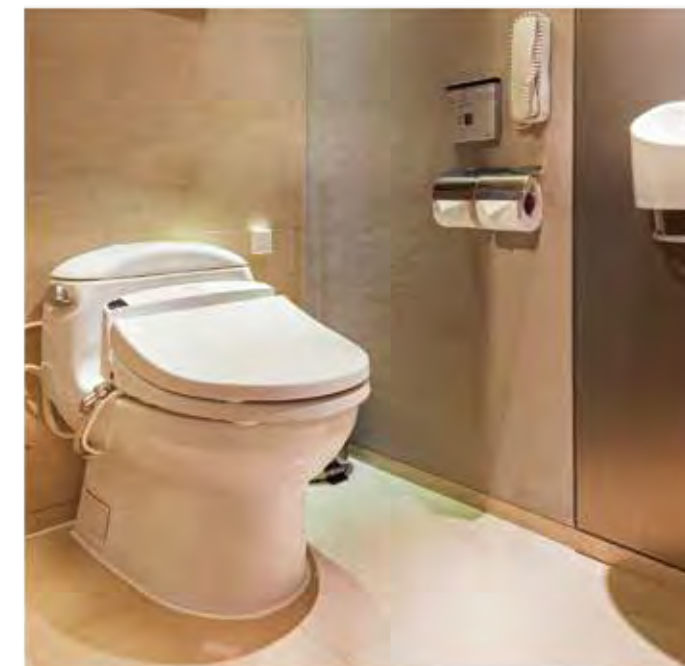
The Okura Prestige Bangkok Hotel

THAILAND

The Okura Prestige Bangkok is a luxurious five-star contemporary hotel located at the heart of Thailand's capital city. The hotel combines unrivalled levels of comfort and convenience with the warmth and charm associated with genuine Thai hospitality.



Details	THAILAND
Country/Area	Hotel *****
Category	2012
Opened	240
Rooms	TCC Luxury Hotels & Resorts PCL
Owner	PIA INTERIOR COMPANY LIMITED
Interior designer	
Product number	TCF491 A
WASHLET	CW914UT, UFS800CW
Toilet	L710C, LW316CJ, L24, LT940, L700C-HR
Lavatory	TS250A, TS192, TX467SK, TS256AS7, DLE104BSH2,
Faucet	DLE404BSH1, DLE404BSH2, TS112B14, TS193
Bathtub	PPYD1620
Shower	TX473SKV1
Web	www.okurabangkok.com



Le Méridien Bangkok Hotel

THAILAND

Mixing contemporary culture with its European heritage, Le Méridien creates a culturally refined, meaningful and stimulating atmosphere inspiring guests to celebrate the beauty of a moment. Discover more than just a new destination. Discover a new way of seeing. Currently, Le Méridien is a global hotel group with a portfolio of more than 100 luxury and upscale hotels. The majority of its properties are located in the world's top cities and resorts throughout Europe, Africa, the Middle East, the Asia-Pacific and the Americas.

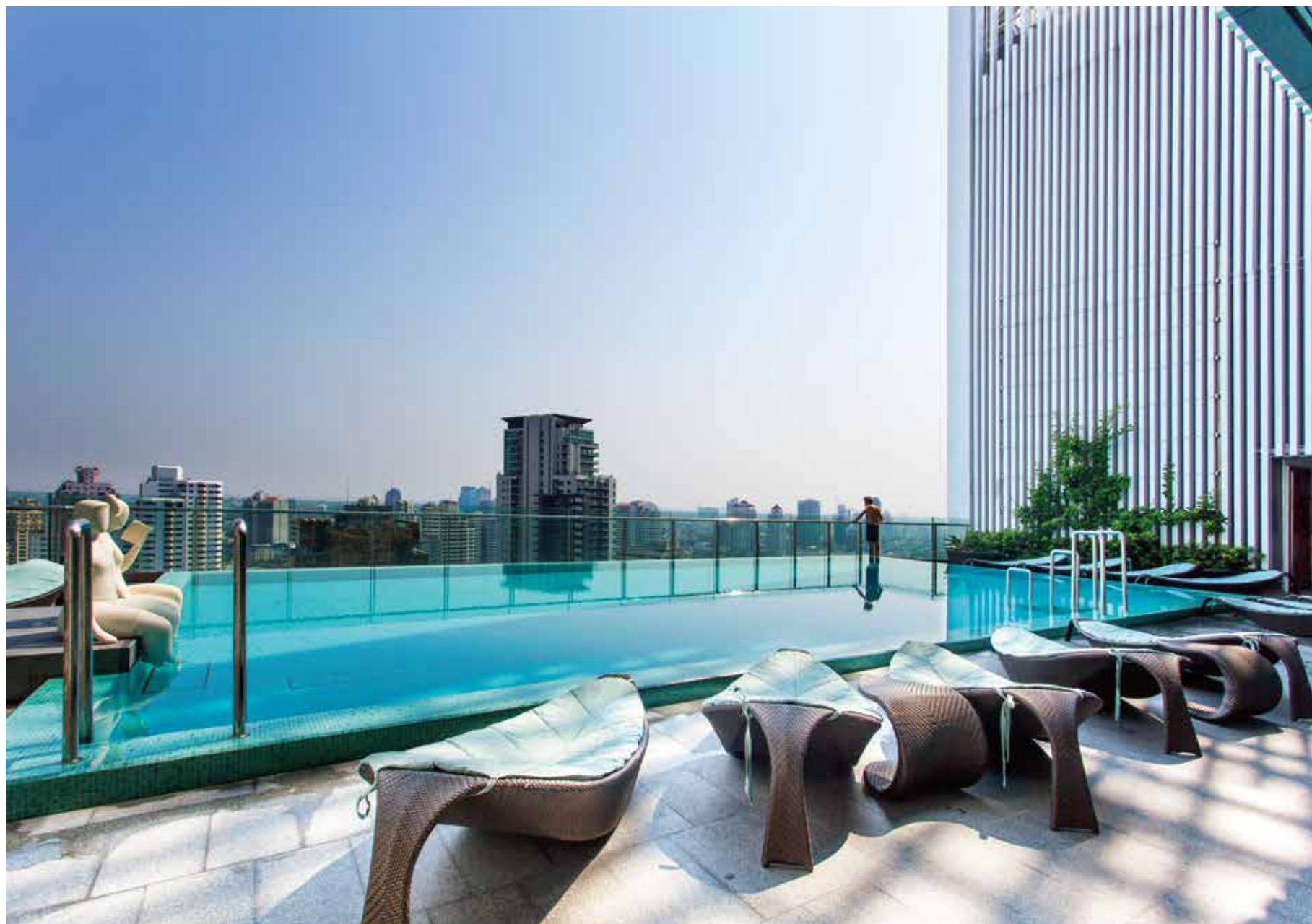


Details	THAILAND
Country/Area	Hotel *****
Category	2008
Opened	282
Rooms	TCC Land
Owner	PIA INTERIOR COMPANY LIMITED
Interior designer	TCF491A
Product number	CW940, CWT822NJ1, UFS800CW
WASHLET	
Toilet	
Web	www.lemeridienbangkokpatpong.com

Hilton Sukhumvit Bangkok Hotel

THAILAND

With more than 540 locations in 78 countries, Hilton Hotels & Resorts provide an authentic and contemporary experience for guests worldwide. Explore the smart design, thoughtful amenities and innovative dining options that make Hilton a global leader in hospitality.



Details	THAILAND
Country/Area	Hotel *****
Category	2013
Opened	280
Rooms	Owner
Owner	TCC Land
Interior designer	PIA INTERIOR COMPANY LIMITED
Product number	
WASHLET	TCF491A
Toilet	CW914UT

Web

www3.hilton.com

Le Méridien Taipei

TAIWAN

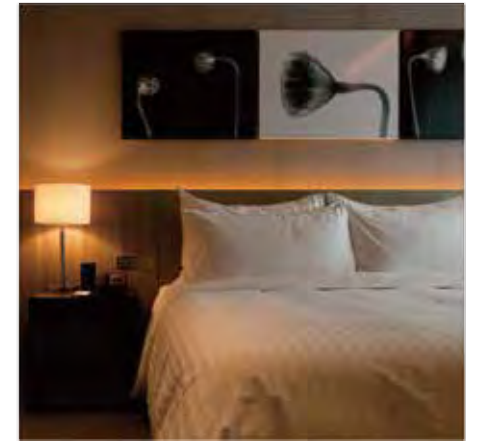
The fashionable and succinct architectural style makes Le Méridien Taipei an extraordinarily stylish five-star hotel. It is ideally situated in the dynamic central business district where guests can enjoy easy access to corporate headquarters, retail malls and Taipei's must-see attractions. The rooms and suites in Le Méridien Taipei exhibit modern luxury and elegance. The contemporary, comfortable styling of the Deluxe Rooms are characterised by many luxurious touches- marble floors, flat screen TVs, leather and steel chairs, large showers and a signature king-sized bed. The guest suite located on the fifth floor is punctuated by a private exterior balcony where guests can fully enjoy the vast and splendid skyline of Taipei.





Details
 Country/Area TAIWAN
 Category Hotel *****
 Opened 2010
 Rooms 160
 Designer ARTECH ARCHITECTS, LTW Singapore
 Products NEOREST, WASHLET
 Product number NEOREST CES9911TG
 WASHLET TCF491T
 Toilet CU466P+TEF75LNV9+TC291
 Lavatory LW210CGU, LW583CB
 Faucet TWEN12EX
 Web <http://www.lermerdien-taipei.com>

TOTO products are integrated into all the bathrooms in Le Méridien Taipei. The reason lies in TOTO's signature integration of stylish, modern design with unprecedented functions. The public bathrooms also use TOTO sanitary products. The large white marble wash basins naturally blend into the simple but elegant interior design to create a cozy and calming ambience. The guests can feel a strong sense of luxury no matter which public bathrooms they enter into.



The Okura Prestige Taipei

TAIWAN

The Okura Prestige Taipei is the ultra-five star hotel under the legendary Okura Hotels & Resorts. The design of the hotel exterior is the latest work by the famous Rocco Design Architects Limited from Hong Kong. The interior design is led by Chhada, Siembieda & Associates Ltd. also from Hong Kong, specialising in architectural design for hotels. The theme of the lobby is European new modern classic which incorporates simple colours into modern spaces with crystal lighting to create a low-key, calming ambience.



Details	TAIWAN
Country/Area	Hotel *****
Category	2012
Opened	208
Rooms	Hotel Okura Co., Ltd
Owner	Rocco Design Architects Ltd
Designer	NEOREST, WASHLET
Products	
Product number	CES9786, CES9573, CES9911TG
NEOREST	CW886SGU, TC391
Toilet	L546GU, LW586CGU, L537U, LW240CJU,
Lavatory	L238CGUT1, SK322, L238CGUT1
Faucet	TWL701, TX119LGV1, TMC95R, TWEN41AX
Web	http://www.okurataipei.com.tw



The hotel offers 208 exclusively designed guestrooms. Built with seven different room types, they utilise soft lighting to illuminate the spacious three meter-high ceiling space. Sliding-partitions freely divide the bed-room, bath area and powder room, offering guests the most comfortable and relaxing experience. The European, Chinese and Japanese themes are fused into the design, with the bedroom using a cherry blossom motif and European totem and sawing arts- an expression of contemporary living. A luxury in modern living, the bath tub and shower are separated to give guests a larger and more comfortable bathroom space. Some guest rooms have a private balcony that offers an exclusive city view for our guests.



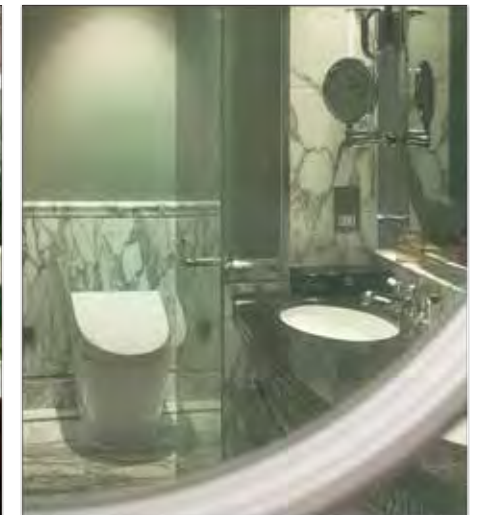
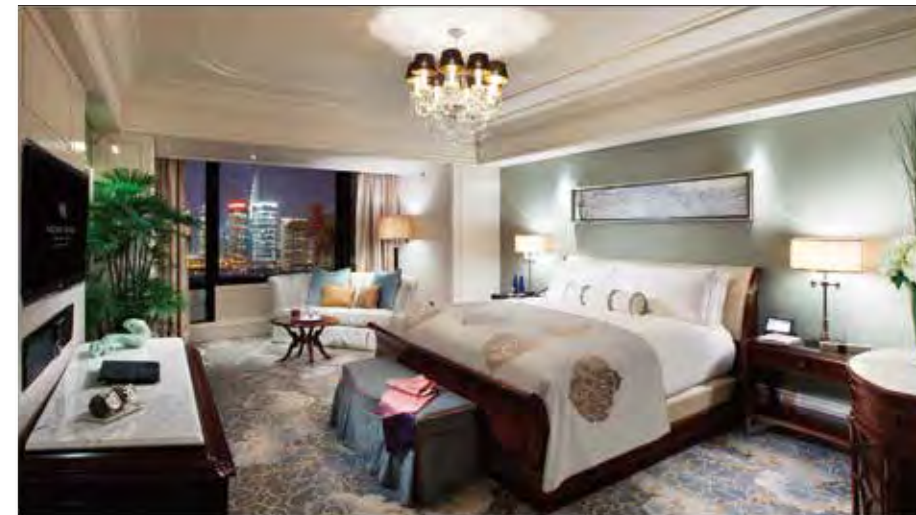
On top of that, each room is equipped with separate dry-wet bathing facilities, one with a large bathing tub with a twenty-one-inch waterproof TV and an independent shower room and powder room which provides a multi-functional toilet. An HD TV, high-speed internet connectivity, and an electronic safe all ensure convenience and comfort. Guests can enjoy a workout at the fitness centre, a leisurely swim in the outdoor heated swimming pool, and unwind at the massage facility, all without any disturbance.



Waldorf Astoria Shanghai On The Bund

CHINA

Waldorf hotel is one of the most luxurious and famous five-star hotels in the world. The Queen of England, the Pope, the Oil Prince and the US President have all left their footprints here. You can feel the designers' respect for the history as you enter into the lobby and view the ten-meter-high ceiling that is decorated similarly to the British Royal Palace. On the left side of the lobby stands the L-shaped gallery bar, which once won the award for the longest bar of the Far East. After a century of absence, the Waldorf Astoria has been meticulously restored to once again become a prominent building structure. The architecture can transport you into the old Shanghai with jazz notes floating through the evening air accompanied by magnificent singing and dancing.





Details
 Country/Area CHINA
 Category Hotel *****
 Opened 2011
 Owner Hilton Worldwide
 Designer HBA
 Rooms 260
 Product number NEOREST CES9683JCS
 Toilet FBY1710CPV27
 Bathtub
 Web <http://www.waldorfastoriahotels.com.cn/SHAWAWA/>

During the process of restoring the traditional architecture into the ultimate luxury hotel, perhaps the most important and notable aspect is the transformation of its original 40 rooms into 20 luxury suites. Pleasant living rooms with cozy sofas and spacious meeting areas are decorated with a classic European style, while the latest LED flat screen, bar style audio electronics and inset blue-ray VCR, brings the latest in modern technology. The spacious toilet is decorated with a gray textured marble that is specifically used for sculpture. What is more, the simple but elegant TOTO NEOREST toilet integrates beautifully with the whole bathroom. A European style TOTO bathtub is filled with rich classical designs. Through the windows of the suite, the guest can enjoy the fantastic view of the Huangpu River and the stretch of historical buildings. The guest also can enjoy the prosperity of Sichuan Street and feel the unique charm of the old town. Here at the Waldorf Astoria, historical nostalgia meets modern classical elegance.



Four Seasons Hotel Pudong, Shanghai

CHINA

The Four Seasons Hotel Pudong is the second hotel opened by Four Seasons Resorts and Hotels Group. It is strategically located in the core area of Pudong Lujiazui Financial Area and exhibits the overpowering charm of modern and elegant Shanghai city. Due to its superior location, it is only a few minutes walk to IFC, Shanghai World Financial Center, Oriental Pearl TV Tower and Shanghai Ocean Aquarium.



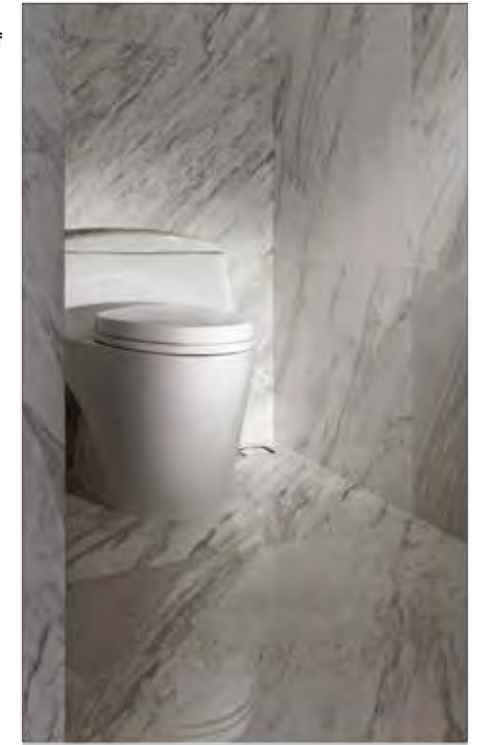
Details	CHINA
Country/Area	hotel *****
Category	2012
Refurbishment	187
Rooms	Four Seasons Hotels & Resorts
Owner	
Product number	CW923
Toilet	FBY1820CHPWV10
Bathtub	
Web	http://www.fourseasonspdhotel.com





The Four Seasons Hotel Pudong owns 187 deluxe rooms and suites, which are all on the 30-40th floors of the 21st-century, Art-Deco style mansion. The whole architecture diffuses the splendid Shanghai-style of classic design that exudes solemnity and elegance. This reserved tone creates an overarching feeling of modernity and luxury. The Chinese restaurant, Shang-Xi, offers fine Chinese cuisine specialising in local and Cantonese dishes. The design concept of Shang-Xi is inspired by a fusion of Shanghai modernity with traditional Chinese culture making it Shanghai's most dynamic as well as most discreet of restaurants.

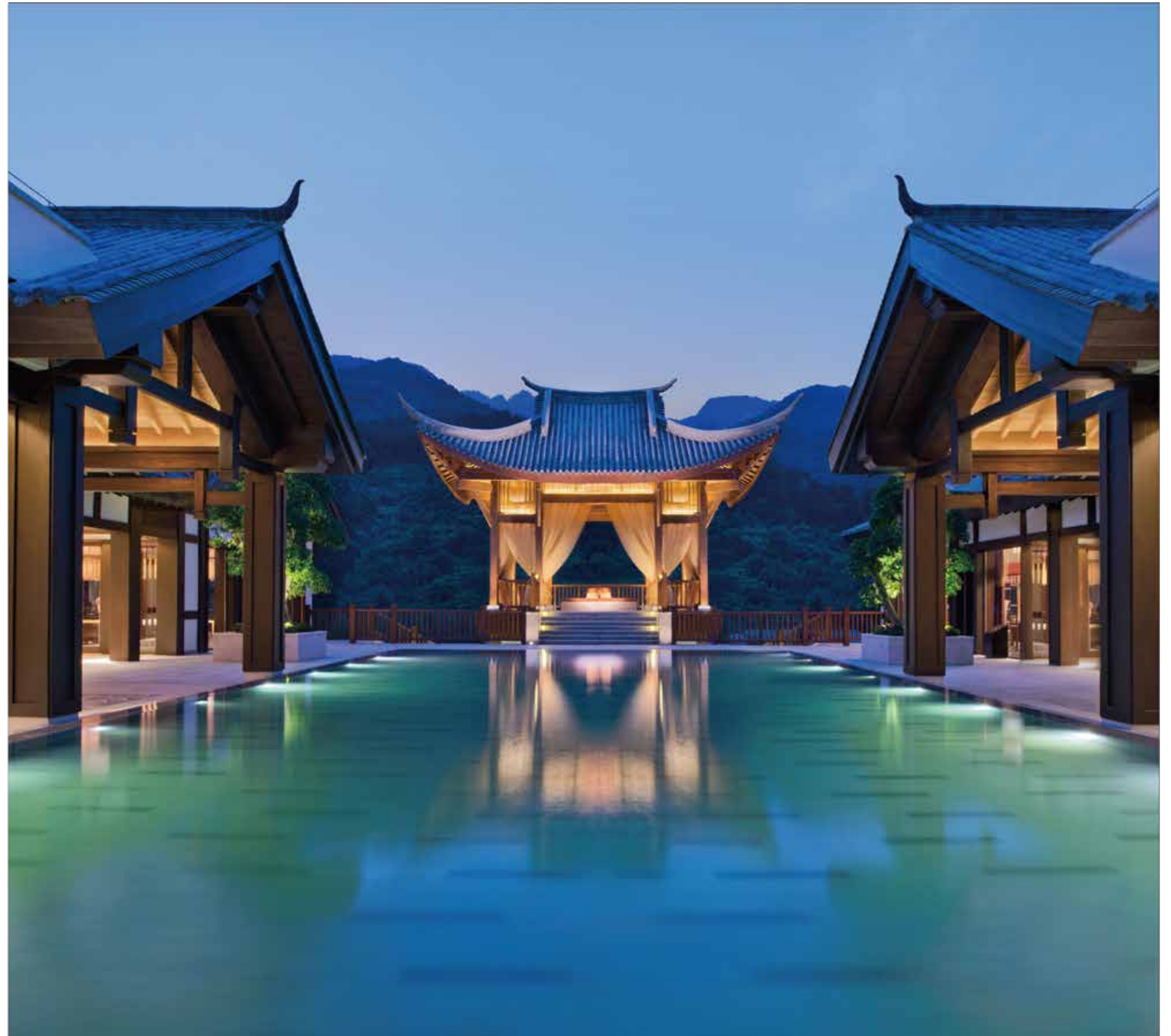
In order to provide impeccable and considerate services to esteemed guests, The Four Seasons Hotel Pudong selects a series of premium sanitary products. A well-equipped marble decorated bathroom includes the stylish TOTO bathtub, TOTO toilet and The Four Seasons Hotel exclusive health and bath-care products. Every guest here can feel cozy and comfortable just as if you're in your own home. Serene, relaxing and exclusive, The Four Seasons Hotel Pudong encourages you to fully indulge in the joys that life has to offer.



Banyan Tree Chongqing Beibei

CHINA

Banyan Tree Chongqing Beibei is situated at the foot of Jinyun Mountain Natural Reserve in scenic Beibei district's 10 Mile Hot Spring Town. Banyan Tree Hotels & Resorts is a combination of resort hotels and hot springs, and offers high-quality recreational services such as hydrotherapy, SPA facilities and hot springs. The architectural style of Banyan Tree Chongqing Beibei is inspired by the landscape and culture of Chongqing. Its architecture was designed in the style of the Republic of China, combined with Chinese and Western elements as well as the multi-layered residences of Chongqing.





Details
 Country/Area CHINA
 Category Hotel&Resort
 Designer Architrave
 Owner Banyan Tree Hotels & Resorts
 Opened 2013
 Rooms 107
 Product Code
 Toilet NEOREST CES9911CS
 Bathtub PPY1724
 Bathtub faucet DM324CF
 Lavatory LW523B
 Web http://www.banyantree.com/zh/chongqing_beibei/



It is often said that a perfect guest room must be paired with a perfect bathroom. The bathroom may appear less important than other areas, but it can leave a lasting impression on the overall experience of lodgers. In fact, guests expect even higher standards for the toilets of luxury hotels. They hope to experience something with new, unique features in addition to high levels of comfort and a beautiful appearance. In this regard, Banyan Tree Chongqing Beibei undoubtedly sets the standard. All sanitary products are specially selected. Among them the most high-tech is the fully-automatic pedestal pan which automatically opens and closes the cover, flushes and deodorises. With the TOTO WASHLET, guests can enjoy a brand new life that is high-tech, sanitary and healthy.



Indulge in an evening bath and lose yourself in the picturesque surroundings. A separate glistening pearl bathtub is the ultimate in elegance and grace. In such a bathtub, it is an ideal way of relaxing with the rolling mountains in front and the running current behind. To unify the space, all the sanitary products are chosen for their elegance and grace. The novel and unique bowl-shaped lavatory situated on top of a desk perfectly matches the circular shape of the pearl bathtub, ensuring a harmonious overall space.



Kempinski Hotel Yixing

CHINA

As a benchmark for superb hospitality, Kempinski Hotel Yixing perfectly combines classic European luxury with the essence of Chinese culture. It won many professional awards during its one year of operation including recognition as Best MICE Hotel. The hotel is calmly located next to Taihu Lake but is still close to the city center of Yixing. Kempinski, founded in 1897, is Europe's oldest luxury hotel group and now operates numerous hotels in Europe: Africa, the Middle East and Asia. Embracing the local culture, each hotel expresses a unique character without losing sight of its heritage. The portfolio comprises of historic landmark properties, award-winning urban lifestyle hotels, outstanding resorts and prestigious residences. Kempinski is a founding member of the Global Hotel Alliance (GHA), the world's largest alliance of independent hotel brands which celebrates its 10th anniversary in 2014.





Details
 Country/Area CHINA
 Category 5* hotel
 Managing Company Kempinski Hotels S.A
 Opened 2013
 Room Capacity 446
 Website <http://www.kempinski.com/yixing>

Kempinski Hotel Yixing offers various gastronomic possibilities for every palate. Bamboo Lobby Lounge, with its four-story glass façade, provides a direct view on the hotel's garden and Taihu Lake and invites guests to relax in a warm and cozy atmosphere. YuanYuan Chinese restaurant, merging traditional features like dark-red clay tea pots with contemporary design, offers a variety of delicious local and Cantonese specialties. Additionally, guests can savour Western tastes at Elements restaurant while enjoying a breathtaking view of Taihu Lake and the prospering town from the city's highest point. Glass and marble enrich the restaurant's premium and contemporary design.

The hotel owns 446 thoroughly decorated rooms and suites with an amazing view of the city. The fusion of state-to-the-art design and traditional Chinese touches enhance the cozy and homely atmosphere. A special luxury in the bathroom is the premium automatic toilet TOTO NEOREST redefining comfort and ease of use. A separate bathtub and a rainforest shower round out the experience.



Lakeville Regency

CHINA

Find the luxury of life in a crowded city. Lakeville Regency is located in the south area of Xintiandi and is one of the most famous housing estates in Shanghai. This luxury estate project is adjacent to the downtown business district of Middle Huai Hai Road, and Xintiandi can be seen just across the lake. The Second Phase of Lakeville Regency has 17 medium-rise and high-rise residential buildings, with an area of 90 to 650 square meters. In the luxury estate project of Shanghai, LWMA architects has designed a personal penthouse for the owner. Designers opened the wall of two duplex apartments which has a staggered floor construction, and merged the two separate houses together. With an area of nearly 1000 square meters, designers created a great living space to meet a family's needs.

Through the large French windows in the living room, whether it is the rippling waves of the lake, or the graceful figure of the Langham Hotel - Shanghai, or the coexistence of nostalgia and stylish charm of Xintiandi, you can catch every scene through the excellent perspective. Furniture in the living room with simple black and white tones such as the large areas of white shelves and the black sofa shows calm elegance. The design of the white vertical shelves not only play a role as a partition, but also as a display for various types of small accessories to embellish the whole space. Close to the living room is a pure white tone of the open kitchen, looking simple and gentle. The open design increases the pleasure of cooking in the kitchen. The main bedroom upstairs follows the simple design philosophy of simplicity and neatness.





Details
 Country/Area CHINA
 Category Apartment
 Designer LWMA
 Product NEOREST
 Product number
 Toilet CES9683JCS
 Lavatory MR720CCR1
 Bathtub PPYD1870PW
 Shower DB137-2C+DB187CF+TB18SV200+PSU1000C
 +TBH43X20V200

The design of the main bathroom is ingenious. In the open air space, the direct sunlight shines onto the grey marble floor through the ceiling of wooden fences. The design of the bathroom gives off a rich modern style. The integrated intelligent toilet which displays subtle luxury has been arranged in a discreet space of the bathroom. The owner who knows how to enjoy his life also chose a set of custom showers for his bathroom. A large head shower offers an experience of waterfall rain. The shower with Gyrostream technology relieves your muscle fatigue and brings you the unique SPA experience. TOTO's NEOREST bathtub adds a sense of modernisation of "intelligence" to the entire space. You can imagine that when night falls, beautiful music will surround you under the bright moon. With the great combination of water and air, the churning bubbles will wrap your body and gently touch every inch of your skin. Free your thoughts with the shimmering lights of the lake, and fully enjoy the moment. With the soft moving wave cycle, you can open and enjoy a bottle of champagne. What a great life this is!



Marinella

HONG KONG

An excellent residence emphasises the integration of the exterior and the interior design of the building, from the the small soft fitted furnishings, to the kitchen appliances, to the bathroom facilities. Every detail reveals the taste of the owners. In fact, it is of the utmost importance that all the details comply with the people's needs and desires. The core values are: People, People, and People. Every detail is designed to be convenient for human use so that owners can easily enjoy the entire space. The bathroom, as a space for relaxation and release, is the primary focus for the designer.

TOTO offers a visual and sensory feast with their premium bath products in the Marinella Project. Every detail reveals extreme luxury. The kitchen and bathrooms are equipped with the most premium products, all satisfying the varied needs of the whole family. The floor of the bathroom is a creamy-white natural stone. A clear and bright mirror, together with the clean decoration of the cabinet, creates a notable brightness. As the most premium TOTO sanitary product, The NEOREST series undoubtedly attracts attention. This series is famous for its intelligent functionality that exudes a simple, natural look. It effortlessly combines elegant design with high-tech functionality to reveal a sense of aristocratic luxury. The NEOREST series continuously receives international design awards, such as IF and Red Dot, confirming its top-rated design taste and quality level. NEOREST series perfectly matches the phenomenal temperament of the Marinella Project. In this bathroom, you can acquire the best physical and mental release. You can quietly enjoy the unity of human nature and the rhythmic quality of water.



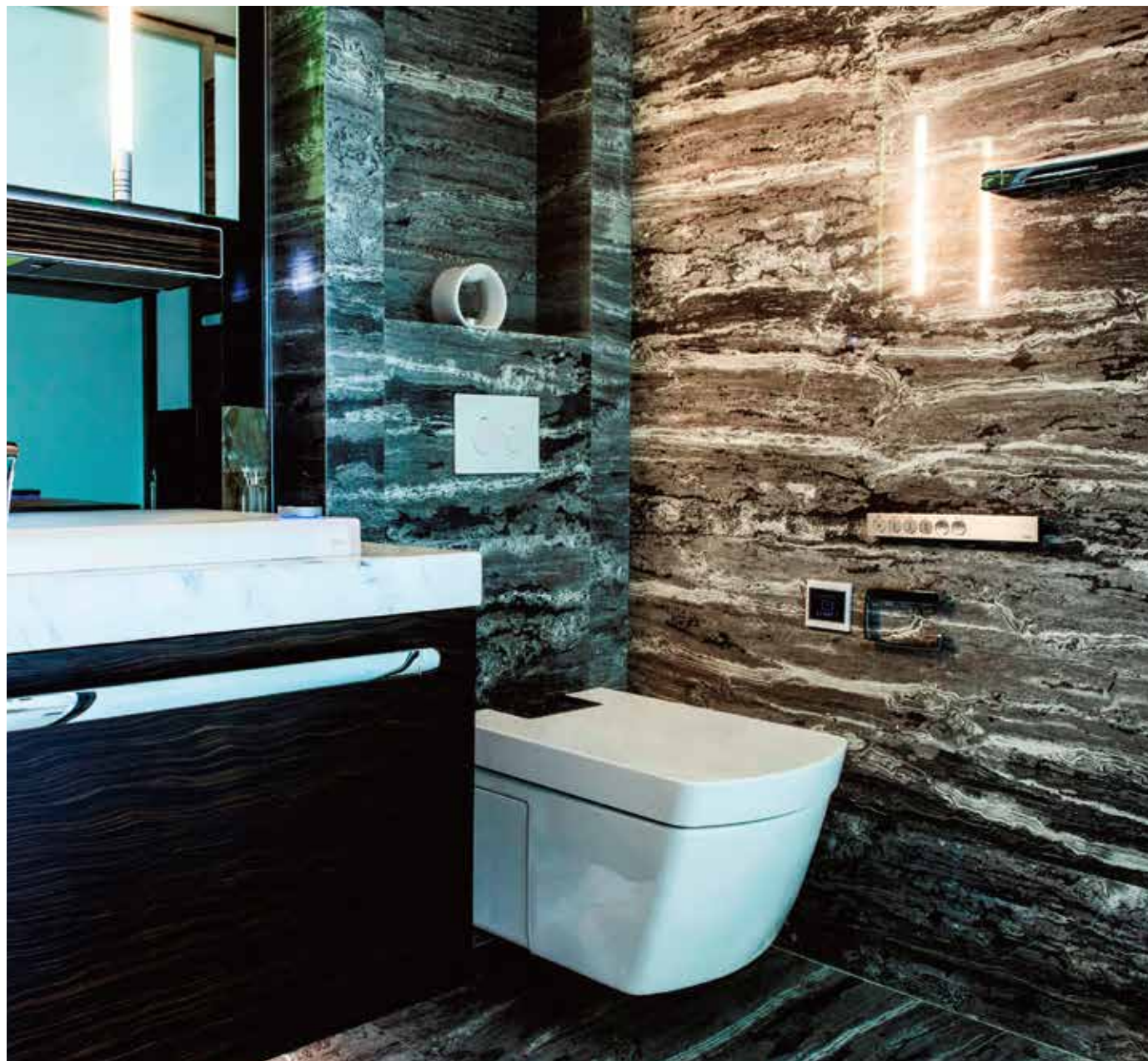


Details
 Country/Area HONG KONG
 Category Apartment
 Design (architecture) Arquitectonica
 Design (interior) STEVE LEUNG DESIGNERS
 Product NEOREST
 Product number TOTO NEOREST CW997B
 Toilet TOTO NEOREST MR720CCR1
 Lavatory MRZ710C,PJS02W
 Bathtub TOTO NEOREST PKL1820C
 Faucet TOTO NEOREST TLXM1A1V200

A free spirit fully enjoys the happiness brought by TOTO NEOREST series. NEOREST series represents a completely brand new casual bathing experience that offers pure enjoyment. The NEOREST intelligent automatic toilet, together with the concealed cistern, shows a simple and elegant appearance that creates an honorable atmosphere. TOTO's distinctive washbasin also adds a level of brightness to the whole project. The NEOREST washbasin applies a luminous material to create a clear and shining visual effect. It is reminiscent of a whirling dancer on the stage instantly catching your eye. The thoughtful and intelligent NEOREST automatic washbasin gently lets the water fall, tenderly and smoothly running across your fingers. The curves on both sides of the wash basin are like flowing water.



A luxurious space can't come to be without a premium bathtub. The stylish, luxurious and elegant appearance instantly occupied the eyes. TOTO NEOREST gives the entire space a sense of style and luxury. The bathtub presents a beauty of transparent clarity and brings a sense of unparalleled intoxication. Dream-like lighting effects offer people who really know how to enjoy life a fantastic visual journey.



Karuizawa Villa

JAPAN



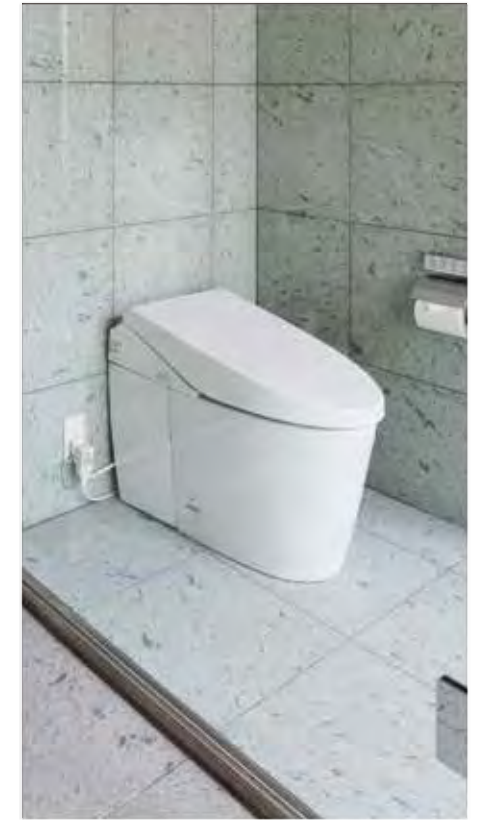
The owner of Karuizawa villa had a desire to use open-space architecture integrated with nature. To fulfill this wish, the outstanding designer Yukio Hashimoto specifically designed deck-shaped balconies not only on the ground floor but also on one side of the bathroom on the first floor. Accordingly, the villa is surrounded by walls on three sides to ensure privacy. You can even cool yourself and enjoy the quiet and relaxing moment after a bath on a beautiful day. On one side of the bathtub, a large stone table is set up to place vases and other decorative items. The owner even can sit or lie on the stone as he or she pleases. Mr. Hashimoto is especially adept at taking advantage of a "blank moment" at the owner's inclination and lets it naturally integrate into the residential design.



Details
 Country/Area JAPAN
 Category Villa
 Designer Yukio Hashimoto
 Product number NEOREST CES9786

Blessed with originally planted leafy green plants in this 900 square meter courtyard, Karuzawa villa is naturally surrounded by greenery. In order to ensure the spacious visual sense, Mr. Hashimoto chose a cylindrical steel structure to widen the vision and create an exquisite view. From every corner of the room, lush green landscape can be enjoyed. Stone brick floors and walls are applied to the spacious bathroom and locker room with a glass partition. The simple sense of the stone materials makes the whole space natural and gentle. Through the north windows, you have a sweeping view of the whole landscape.

The public area and guest rooms are on the ground floor, and the private residential area on the first floor. In the southeast corner of the ground floor is the 90 square-meter kitchen and living room surrounded by a 70 square-meter L-shaped balcony. The large deck balcony facing the courtyard has 2.5 meter deep eaves that offer protection on a stormy or hot day for this "outside room". When the owners look out of the two French windows, the deep eaves perfectly control the light and shadow to make the exterior area greener. A variety of stone and wood, together with natural materials add depth to this area and provide the residents with a poetic lifestyle.



Chikusenso

JAPAN

The aluminum framework in the window suggests a shoji paper sliding screen. The floor and walls are covered in Towada stone, known for its distinctively Japanese sense of softness. Translucent material in the bathtub glows like an old-fashioned paper lantern while indirect lighting casts a blush of warmth on the ceiling. The location is a room at the newly remodeled Chikusenso Mt. Zao Onsen Resort & Spa, reopened in spring 2010. Hashimoto Yukio, the project's interior designer, recalls being struck powerfully by the Japanese view of nature when he saw this bathtub for the first time. Inspired by its form and texture, neutral but futuristic, with an organic softness, he let his imagination run free when designing the rest of the guest room. The curved lines of the bathtub complement with the sharp lines of the window. White light is juxtaposed with red light. Amid the tensions drawn from such beautiful contrasts, the space suggests a natural Japanese landscape ready to gently cradle you in a moment of relaxation.

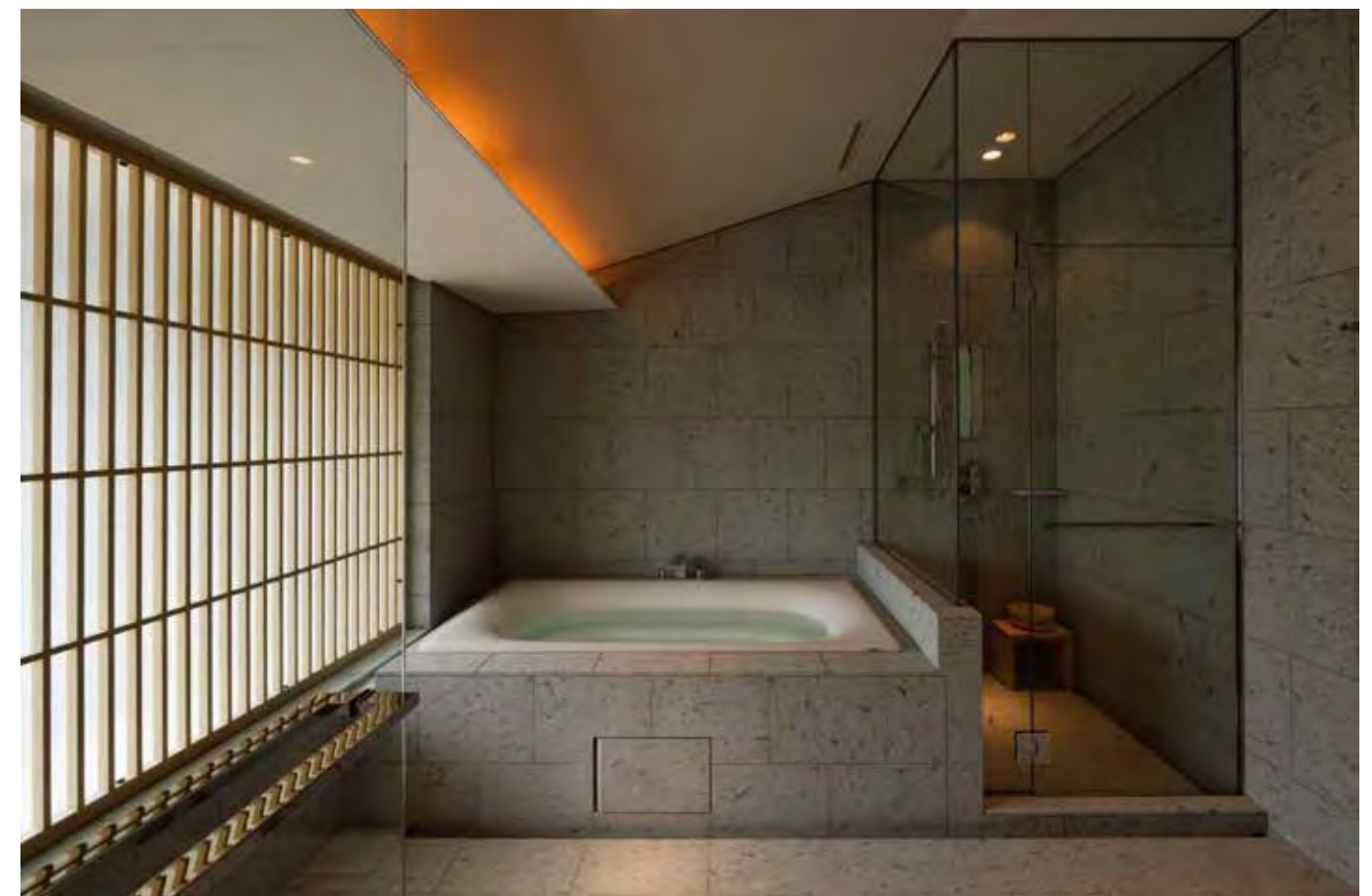


Details
Country/Area JAPAN
Category Resort & Spa
Design (architecture) Atelier Abe Hitoshi
Design (interior) Hashimoto Yukio / Hashimoto Yukio Design Studio Co., Ltd.
Building area 3,172.20m²
Total floor area 5,284.75m²
Opened 2010
Product number
Bathhtub PVK180AC#CR1
Shower faucets TBXS41, TBXS1, TBXS19
Integrated washbasin MLDE PA6
Automatic faucet Aqua-auto TEN12LX
Web <http://www.mtzaoresort.com>





The hotel's forerunner, the Chikusen hot springs inn located in Zao National Park, boasted some of the most expansive grounds in the 400-year history of the Togatta Onsen hot springs area. Hashimoto says that in approaching the renovation he was committed to creating a Japanese-style space. To attract overseas guests, he felt it was critical to use the hot springs to convey Japanese culture and to target the international through the domestic. For this reason, he emphasised not only the communal bath but also the private baths in individual guest rooms. The private baths come in a wide variety of styles. In addition to the illuminated bath seen on the previous page, Hashimoto also designed original Japanese bathtubs made of lacquer, hinoki cedar and ceramics. Guest room layouts are also designed to show off their baths. In this way, an old-fashioned hot springs inn with a proud tradition has been reborn as a new hospitality-focused resort hotel.

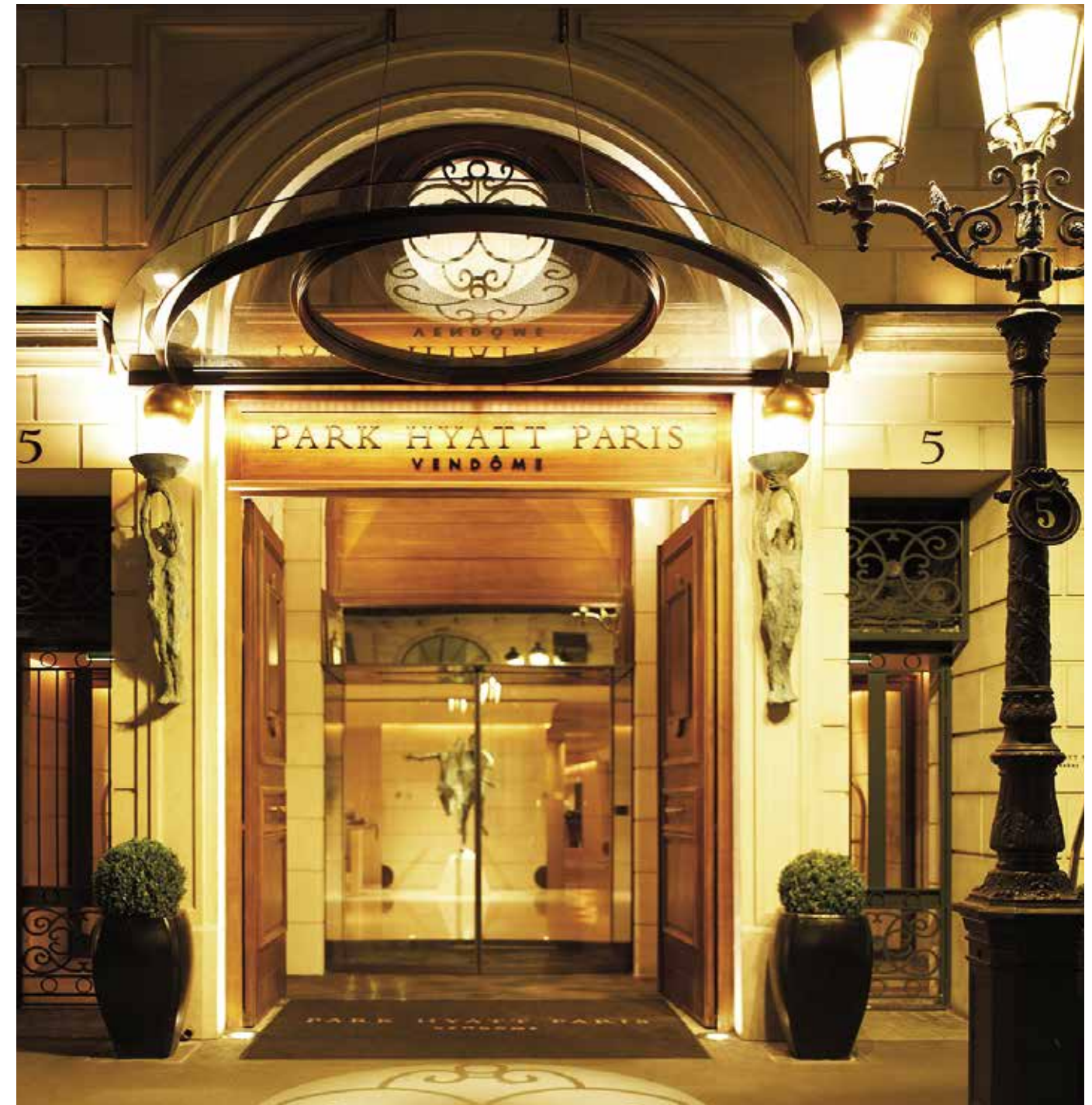


Park Hyatt Paris-Vendôme Hotel

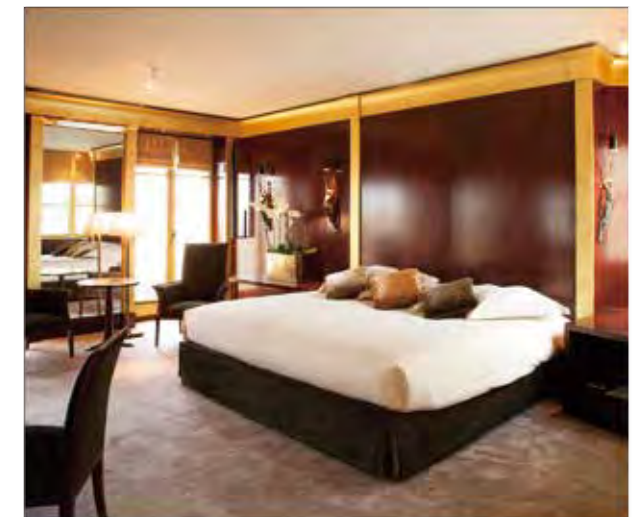
FRANCE

The Park Hyatt Paris-Vendôme Hotel towers over the famed Rue de la Paix, within walking distance of Place Vendôme and Opéra Garnier. As such, it offers a unique view over the city of Paris. Recently upgraded to the rank of luxury hotel, Park Hyatt Paris-Vendôme is a true masterpiece of contemporary architecture and clean, modern design.

The hotel has 156 rooms and 43 impressive suites, a comfortable, inviting lobby, a captivating terrace, several restaurants (including a Michelin-starred restaurant), a spa and fitness centre. Front Desk manager Keisuke Arita has only heard good things about the NEOREST toilets and WASHLETs installed in the hotel. The positive feedback has primarily come from the Park Hyatt's many Japanese guests. The reservation system introduced by the luxury hotels allows guests to specifically request a bathroom equipped with a TOTO toilet. Many guests appreciate this important reservation option.



Details
Country/Area FRANCE
Category Hotel *****
Opened 2002
Interior designer Ed Tuttle
Owner Hyatt Hotels Corporation
Rooms 156 bedrooms, 43 suites
Products NEOREST LE, WC with integrated WASHLET and additional WASHLETs
Product number
Toilet CW998DF
Web <http://www.paris.vendome.hyatt.fr>

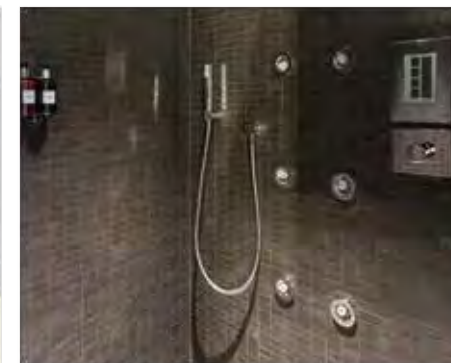
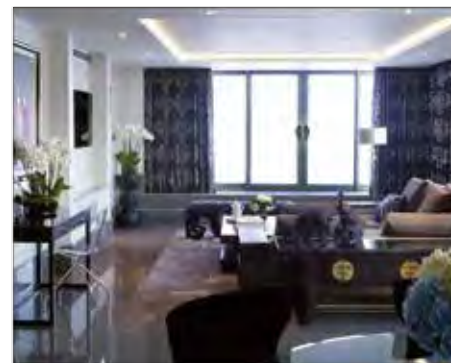
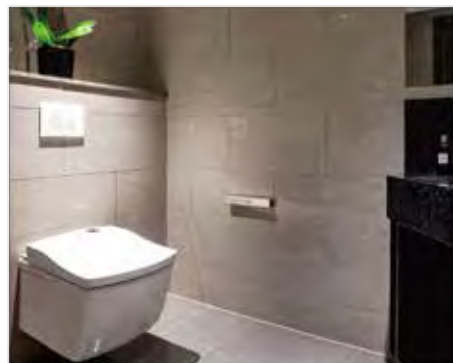


May Fair Hotel, London

UNITED KINGDOM

From its Royal opening in the 1920s to its reputation as Hollywood's playground in London in the 1960s, The May Fair has always enjoyed an iconic status. Exclusive from the outset, it offers guests a mixture of bespoke design, memorable experiences and luxury without pretension.

The finest details are everywhere, from the Spa and Bar to the destination restaurant Quince, but nowhere more so than in the twelve Signature Suites. The latest of these is the Ebony Suite, which comes with a sanctuary bathroom fitted with the ultimate in TOTO luxury from the NEOREST LE range.



Details
Country/Area
Category
Refurbishment
Designer
Owner
Year Built
Number of Rooms/Suites
Product codes
Toilet
Lavatory
Lavatory faucet
Mirror
Accessories
Web

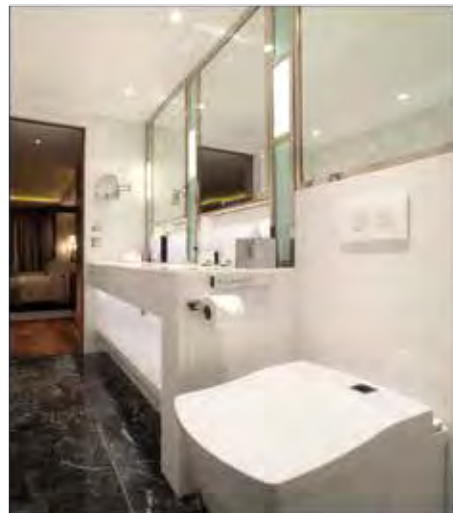
UK
Hotel *****
2012
MACH Architecture in association with
the May Fair in-house design team
Edwardian Group
1920s
40 bedrooms, 13 suits
CW998CH
MR720ACR1, LW991DF
TEN40AWV105
MI10015B-WI
YT900S6, YA900, VH10704U
www.themayfairhotel.co.uk

Hotel Connaught, London

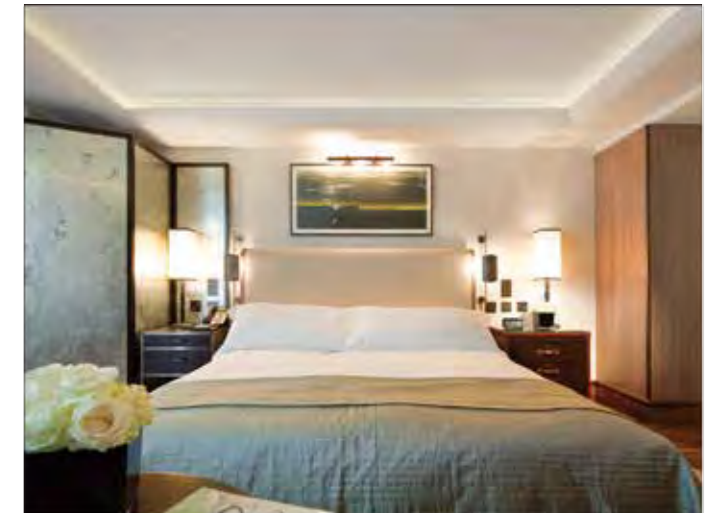
UNITED KINGDOM

One of London's most prestigious hotels, in the heart of fashionable Mayfair, has recently benefited from a delicate restoration. A team of internationally renowned designers were cherry-picked to bring the Connaught up-to-date with state-of-the-art technology and a design-led-interior. The restoration was carried out with meticulous attention to Edwardian period detail, while adding the best of 21st century design.

The bathrooms of the hotel suites feature state-of-the-art technology with 37 NEOREST LE WASHLET WCs for the enhanced comfort of guests. The NEOREST LE is the most innovative WASHLET in TOTO's product portfolio.



Details
Country/Area UK
Kategorie Hotel *****
Refurbishment 2009
Designer Guy Oliver, David Collins and India Mahdavi
Owner Maybourne Group
Year built 1897
Products Neorest LE Washlet
Product Code CW998CH
Toilet
Web www.the-connaught.co.uk



Mandarin Oriental, Munich

GERMANY

The Mandarin Oriental in Munich is an especially exclusive luxury hotel located in an elegant Neo-Renaissance building. The 73 guest rooms feature a classic, elegant look and innovative technologies. All rooms and suites are very spacious and feature their own unique design based on the hotel's Renaissance style. The high-quality technology featured in the rooms is continued in the hotel's bathrooms. TOTO is the ideal partner to supply bathroom ceramics and fixtures that reflect the sophisticated room amenities. NEOREST WASHLETs are installed in the suites, and NC series toilets in the rooms.



Details
Country/Area GERMANY
Category hotel *****
Refurbishment 2011
Owner Mandarin Oriental Hotel Group
Rooms 73
Product NC, wallhung WC, NEOREST SE, WC with integrated WASHLET
Product number CW762Y, CW997DF
Toilet
Web <http://www.mandarinoriental.de/munich/>

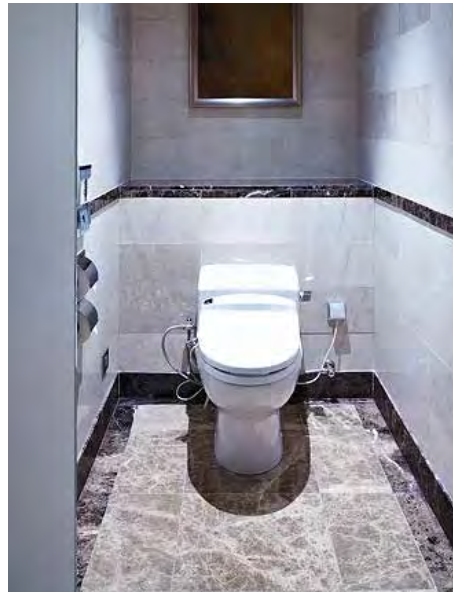


Lotte Hotel Moscow

RUSSIA



The five-star hotel, conveniently located at 8 Novinsky Boulevard in the heart of Moscow's financial and shopping districts, has 304 spacious rooms and suites. Lotte Hotel Moscow also features first-class dining options featuring internationally renowned names. Among them is Les Menus, serving classic French dishes artistically transformed by a Michelin three-star chef Pierre Gagnaire, and MEGU, a Japanese fusion restaurant from New York. In the hotel bar, The Lounge, guests can relax and enjoy premium cocktails, elegant meeting and convention facilities, and an innovative Club Floor for business travellers. Those seeking wellness and fitness will find the world-famous Mandara Spa, a fitness club and modern swimming pool. The ten-storey building also has a large underground car park. The hotel is close to the city's main attractions and entertainment options. The outstanding service aims to anticipate guests' needs and exceed expectations.



Details
 Country/Area RUSSIA
 Category Hotel *****
 Opened September 2010
 Owner Lotte Hotels and Resorts
 Rooms 38 luxury suites and 262 rooms
 Product number Urinal 1.0 Gpf/3.8 Lpf, toilets CS880BRU,
 WASHLETS SG TCF 491K,
 washbasins WHITE L548, bathtub TOTO KIKI
 Web www.lottehotel.ru

TOTO products further underscore this focus on service and luxury. They are featured in the public areas, the Superior, Deluxe, Luxury and Atrium rooms, and in the following luxury suite categories: Junior Suite, Executive Suite and Charlotte Suite. The hotel is equipped with TOTO bathtubs, washbasins, toilets, urinals and WASHLETS.



"TOTO products represent the fusion of design and integrated technology to provide the ultimate in comfort. Guests are very important to us at Lotte Hotel, which is reflected in our service and amenities. This is why we decided to choose TOTO bathroom products," explained Jason Cho, Deputy General Manager at Lotte Hotel Moscow.

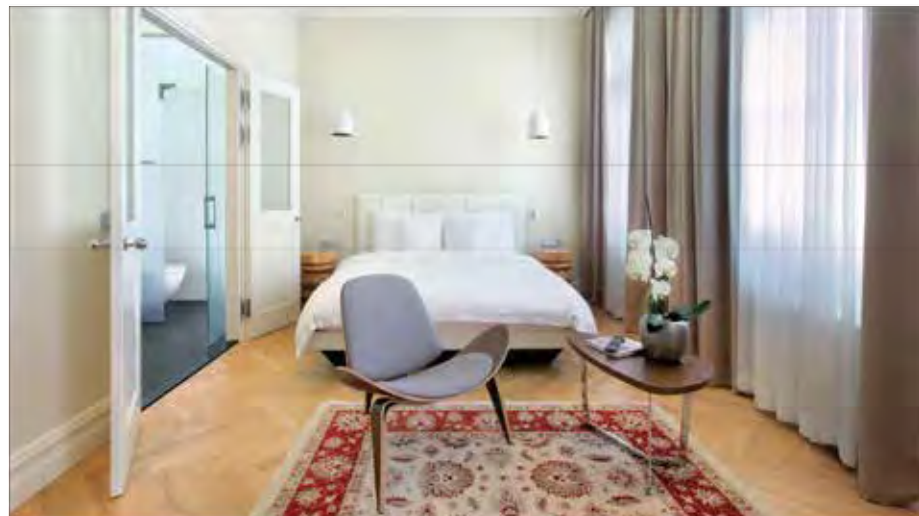


Hotel Sanssouci Vienna

AUSTRIA

This exclusive luxury hotel brings Yoo's distinctive design to Vienna's cultural centre, one of the city's top locations. The highlight of this lifestyle hotel is its collection of modern art, which includes originals from Roy Lichtenstein, Allen Jones and Steve Kaufman. The works are on display in the hotel's public areas and rooms.

The uniquely designed rooms and suites all share an atmosphere of relaxed, effortless luxury. Guests will also enjoy this characteristic charm throughout the hotel, which is the perfect retreat in the heart of the bustling city. A WASHLET is an essential part of every luxury hotel. The owners chose the WASHLET GL with the NC collection toilet.



Details	AUSTRIA
Country/Area	Hotel*****
Category	Yoo
Designer	Hotel Sans Souci
Owner	1872
Year built	2012
Renovated	63
Rooms and suites	
Product number	WASHLET GL TCF891G,
Washlet	NC wall huang CW762Y
Toilet	
Web	www.sanssouci-wien.com



Jal Lounge, Frankfurt Airport

GERMANY

The lounge of Japanese airline JAL at Frankfurt Airport was renovated and designed to look like the JAL Lounge at Tokyo Airport. The first-class lounge is twice as large as before, offering 153 passengers Japanese design and comfort spanning 600 square meters.

TOTO installed NEOREST Neorest LE WASHLETS in the bathrooms to ensure that the guests have a relaxing, comfortable stay. The lounge is just a two minutes walk from the departure gates.

The manager of the JAL Lounge at FFM Airport, is impressed by the benefits of the WASHLET: "The WASHLET is an established part of Japanese culture, which is enough of a reason to have it in our lounge. Japanese passengers can enjoy the level of comfort they are used to, and European guests can get excited about experiencing Japanese bathing culture."



Details
Country/Area GERMANY
Category Airport lounge
Location Frankfurt Airport
Renovation 2009
Product Neorest LE Washlet
Product number CW997DF
Toilet



Chugai Pharma, London

UNITED KINGDOM

As part of the up-grading of its reception and meeting rooms, the management of this global pharmaceutical company specified TOTO products for the washrooms. Their choice was to enable visitors and staff to experience the very best in contemporary Japanese culture and technology. To provide a truly luxury experience, both the male and female facilities comprise three generously proportioned, self-contained rooms equipped with TOTO fixtures and fittings: from innovative WASHLET WCs, ingenious Self Power faucets and elegant paper holders. The products stand out against a dramatic backdrop of highly polished red lacquer-style paneling and sophisticated dark wood.



Details	UK
Country/Area	Workplace
Category	2011
Refurbishment	Space Workplace Design
Designer	Japanese Pharmaceutical Company
Owner	1980
Year Built	
Product numbers	
Toilet	CW762Y
Washlet	TCF891G
Lavatory	LW760Y
Lavatory faucet	TEN12AWV205
Accessories	YH87R, YA900, YAB901

Franziskus Hospital, Bielefeld

GERMANY

NC series toilets were installed in 26 patient bathrooms as part of the renovations performed at the Bielefeld hospital. The hospital's technical director and hygiene expert chose the TOTO toilets because they were proven to dramatically reduce bacterial loads required for a German Hygiene Certificate. The new Tornado Flush technology, special CeFIONtect glaze and easy-to-clean rimless bowl prevent dirt and bacteria from accumulating in the toilet. The flush is also far quieter than conventional toilets.



Details
Country/Area
Category
Operated by

Refurbishment
Product
Product number
Toilet

Web

GERMANY
Hospital
Katholische Hospitalvereinigung
Ostwestfalen GmbH (Ostwestfalen
Catholic Hospital Association)
2011
NC, wallhung WC
CW762Y
www.franziskus.de

Halekulani

USA

In Hawaiian, Halekulani means, "house befitting heaven," an appropriate name for a hotel renowned worldwide as Oahu's finest. The luxurious Orchid Suite was introduced in 2008 as part of a facility-wide renovation conducted in advance of the hotel's twenty-fifth anniversary the following year. With 220 square meters of interior floor space, the suite includes a bed, bath, living and dining rooms as well as a kitchen where guests can enjoy food prepared by the hotel's top chefs. It even has a den outfitted with the latest in audio-visual equipment. Opening onto a veranda and gardens, the windows offer magnificent views of Waikiki Beach and Diamond Head.

With its neutral decor, the interior expresses a sense of the Hawaiian spirit and is fully appointed with specially selected fixtures and furniture. The bath area is particularly well equipped, including not only a large multi-function bathtub but also a cold-water plunge bath and a shower room for both overhead rain showers and full-body steam showers. Every guest can enjoy the luxury of bathing brought about by the TOTO NEOREST bathtub and lavatory. The hotel's Spa Halekulani boasts the best-rated service in the US. Orchid Suite guests can also relax to their heart's content in their own personal space with a special program of exclusive treatments conducted in the suite's bath area.



Details
Country/Area USA
Category Hotel *****
Client Halekulani Corporation
(wholly-owned subsidiary of
Mitsui Fudosan Co., Ltd.)
NEOREST
Products
Product number NEOREST PPYD1870PW
Bathtub NEOREST LW991B
Lavatory
Web <http://www.halekulani.com/>



TOTO



NEOREST XHII

Turn your home into a haven of well-being. The NEOREST collection combines the latest technologies with TOTO's signature clean design. The NEOREST with Actilight is a powerful cleaning system that brings new levels of health and hygiene to the washroom. Experience the pleasure of using a toilet that always looks and feels brand new.



washlet

The Washlet is TOTO's signature product. It first debuted in Japan in 1980 and revolutionised bathrooms across the country. The Washlet offers an array of services that cleans and refreshes for your own enjoyment. Experience a new way of using water in the bathroom.



reddot award 2013
winner



CI Contemporary

An interpretation of a new life experience. The CI series is applied with simple design language to show the fashionable charm of elegance. Personalised to fulfill your different requirements, it creates a space that belongs just for you.



reddot award 2014
winner

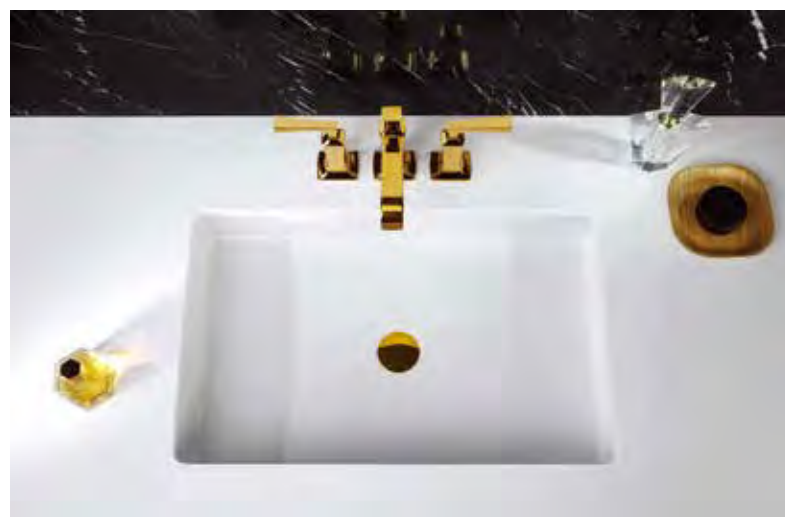


CII Classic

Classic sophistication melded with a modern and elegant profile makes the CII series perfect for any design aesthetic. The sleek and highly efficient faucets create a memorable bathroom experience.



reddot award 2014
winner



Showers

TOTO's versatile shower system features innovative technologies designed to transform the everyday shower into a luxurious experience. Aerial shower technology infuses air into each water droplet. You feel as though you're standing below a particularly full stream of water without any increase in the amount of water used.



reddot award 2014
winner



TOTO

TOTO ASIA OCEANIA PTE. LTD.

10 Eunos Road 8 #12-07
Singapore Post Centre
Singapore 408600
Phone: +65-6744-6955
Fax: +65-6841-0819

TOTO ASIA OCEANIA PTE. LTD.

101, Kamla Executive Park
Opposite Vazir Glass Works
Andheri Kurla Road, Andheri (E)
Mumbai - 400059, Maharashtra, India
Phone: +91-22-4022-3717/ 3718
Fax: +91-22-4022-3719

TOTO ASIA OCEANIA PTE. LTD. MIDDLE EAST BRANCH

LOB19-1701-1702, Jebel Ali Free Zone
P.O. box 261804, Dubai UAE
Phone: +971-4-886-5983
Fax: +971-4-886-5986

TOTO VIETNAM CO., LTD. HANOI BRANCH

R.810, Daeha Business Center,
360 Kim Ma Str., Ba Dinh Dist.,
Ha Noi, Vietnam
Phone: +81-4-3771-4354
Fax: +84-4-3771-4355

TOTO ASIA OCEANIA PTE. LTD. MANILA BRANCH

Unit 1010, 10th Floor, Rufino Building
Ayala Avenue corner VA Rufino Street
Makati City, 1226 Philippines
Phone: +63-2-887-6643
Fax: +63-2-887-4084

TOTO MANUFACTURING (THAILAND) CO., LTD. BANGKOK BRANCH

Q House Ploenjit Building, Ground Floor
598 Ploenchit Road
Lumpini, Pathumwan, Bangkok 10330
Tel: +66-2-650-9925
Fax: +66-2-650-9923

<http://asia.toto.com>

