

<http://asia.toto.com>

TOTO

TOTO

Global reference catalogue

VOL. 2

Global reference catalogue

TOTO



TIMELESS DESIGN

Contents

ASIA

Waldorf Astoria Dubai Palm Jumeirah	03
Park Hyatt Hyderabad	09
Taj Palace, New Delhi	15
Madison Taipei	21
Banyan Tree Shanghai On The Bund	27
Waldorf Astoria Beijing	33
The Westin Chongqing Liberation Square	39
Conrad Beijing	45

Xanadu Beijing	51
Park Hyatt Sanya Sunny Bay Resort	55
Hoshinoya Okinawa	63
The Tokyo Station Hotel	69
Palace Hotel Tokyo	75

OCEANIA

Park Hyatt Sydney	81
-------------------	----

EUROPE

Rosewood Hotel, London	87
Buddha Bar Hotel, Paris	93

AMERICA

The Ritz-Carlton, Montreal	99
Fairmont Miramar Hotel & Bungalows	105
Brushstroke Restaurant	111

Waldorf Astoria Dubai Palm Jumeirah is a remarkable beach resort destination. A pristine white pearl surrounded by the azure waters of the Arabian Gulf, the hotel has a generous private beach with soft sands, palatial public spaces, the luxurious Waldorf Astoria spa, and elegantly designed guest rooms and suites.







Details
 Country/Area Dubai
 Category Hotel&Resort
 Opened 12th Marh 2014
 Owner Al Habtoor Dubai
 Rooms 319
 Interior designer KCA Dubai
 Product number
 Toilet CW822NJWS
 Bathtub FBY1710CPE
 Lavatory LW540J
 Faucet TX103LGNCBR,TX448SGK1
 Shower TX489SGK1,TX421SGNC,
 TX453SGNC
 Web <http://waldorfastoria3.hilton.com>



Park Hyatt Hyderabad is the first urban Park Hyatt hotel in India. As a contemporary and elegant hotel, it offers business travellers and local guests, a sophisticated ambience. This top brand of Hyatt that believes 'luxury is personal', and weaves rare and unexpected pleasures into each and every day. With a vision to create an intimate hotel experience that celebrates fine art, delicious food and wine, and truly personalized service, Park Hyatt hotels around the world are enriched, sophisticated and uncommon, making one's experience, a world of exception.



The hotel features 185 spacious and elegantly appointed rooms, 24 suites and 42 service apartments. Each of the hotel's guestrooms and suites are among the largest in Hyderabad, measuring at least 45 square meters and 110 square meters respectively. Designed by the renowned architecture firm of John Portman & Associates, each room at the hotel is designed to cater to the discerning individual seeking privacy, personalized service and luxurious elegance of a contemporary hotel. Offering comforts of home and more. The generously proportioned and well-appointed residence is the city's first and most contemporary and spacious fully serviced apartment. With 42 apartments forming The Residence, each one of them is set up with well-furnished intricate details and facilities. The Residence at Park Hyatt Hyderabad is the preferred address for all residents who look for a perfect blend of luxury and personalized services.





Details	
Country/Area	INDIA
Category	Hotel *****
Owner	Gayatri Hitech Hotels Ltd
Opened	2012
Rooms	185 spacious and elegantly appointed rooms, 24 suites and 42 service apartments
Interior designer	Hirsch Bedner Associates
Products	
Toilet	CW822J#W, TX215C, TC393VS#W
Bidet	BW822
Ecowasher	TCW03SV2
Bathtub	FBY1600C
Lavatory	LW241CJ, LE242
Faucet	DLE105
Urinals	U104HJT1, DUE106UA
Sensor	DCE 603U



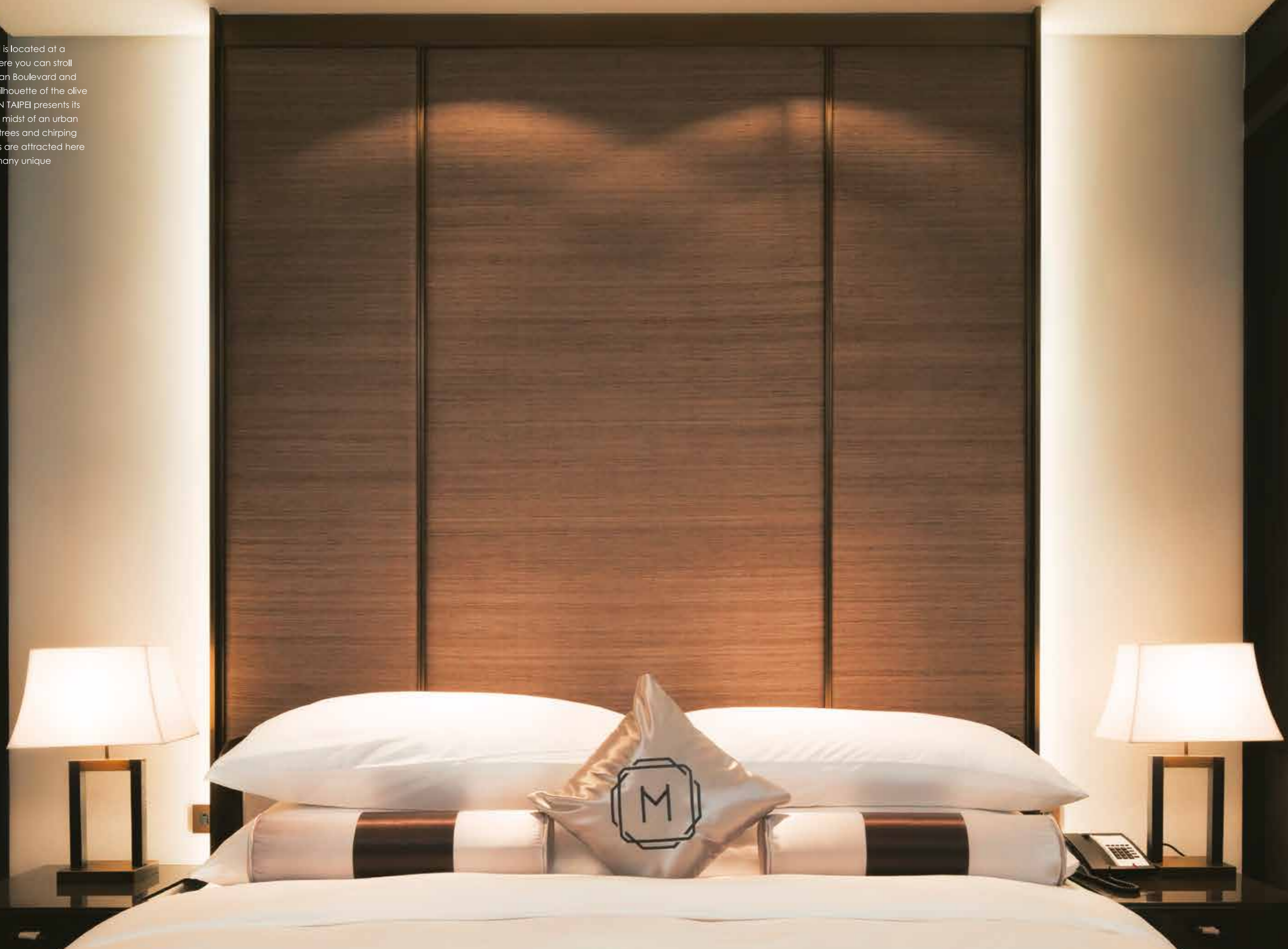
Synonymous with lavish accommodations and unrivalled service, Taj Palace, New Delhi offers a nonpareil combination of warm Indian hospitality, contemporary efficient service, and modern luxury. The Hotel pays tribute to the Mughal era by bringing you some of its arts, traditions and cuisine in a modern setting. Located in the exclusive Diplomatic Enclave, minutes away from downtown and the presidential palace, this preferred residence of visiting Heads of States and Global Business Leaders has had the privilege of hosting historic visits and global summits for over 30 years. With its variety of rooms ranging from superior, deluxe rooms to exquisitely designed suites, it clearly stands apart in service, in facilities and in its distinguished patronage. The warmth of the enchanting white-marble lobby, adorned with traditional Indian motifs and architectural embellishments, occupies the pride of place at the hotel.

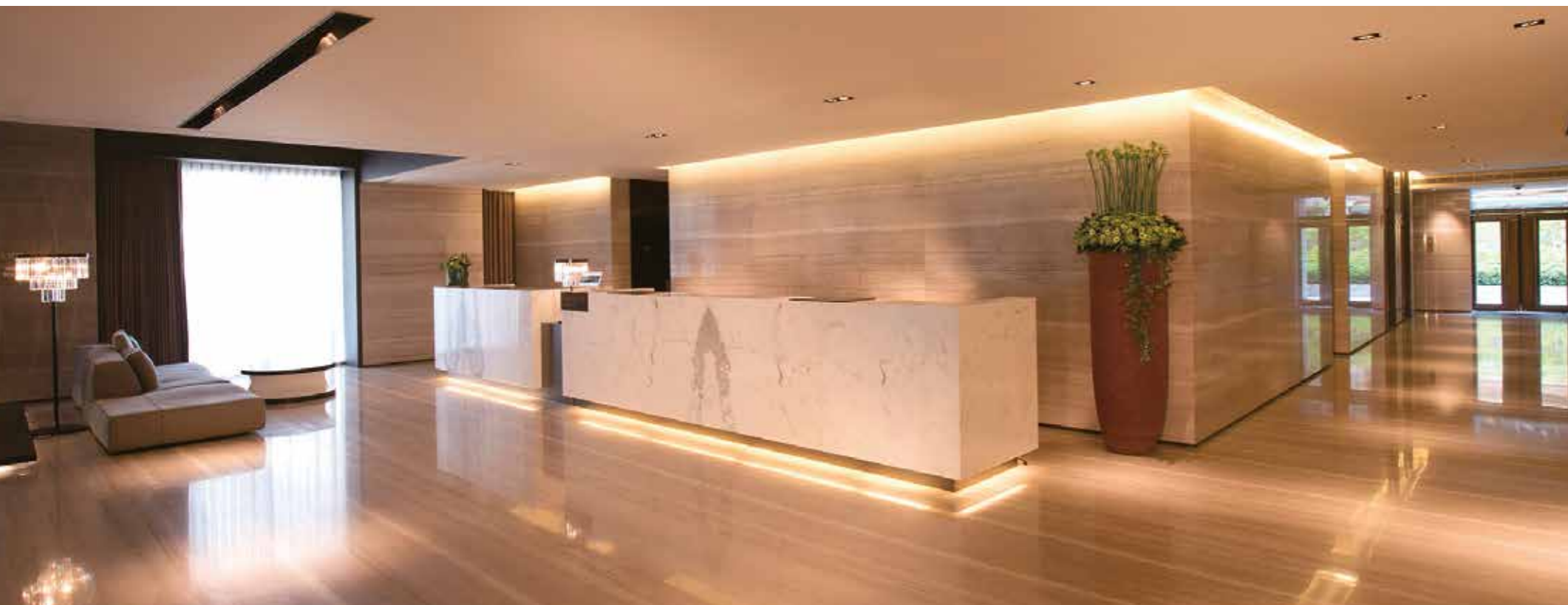




Details	
Country/Area	INDIA
Category	Hotel *****
Owner	IHCL-Indian Hotels Company Ltd.
Opened	1982
Rooms	403
Product number	
Toilet	CW580K,TC300,TX215C, TX722AES&TX703AESV1, TXABV1N
Lavatory	LW528J
Bathtub	FBY1710CPV
Faucet	DL320-1,THX1A-6N,TX263SV1
Shower	DB130-1C,TX473SESV1, DB162CMF

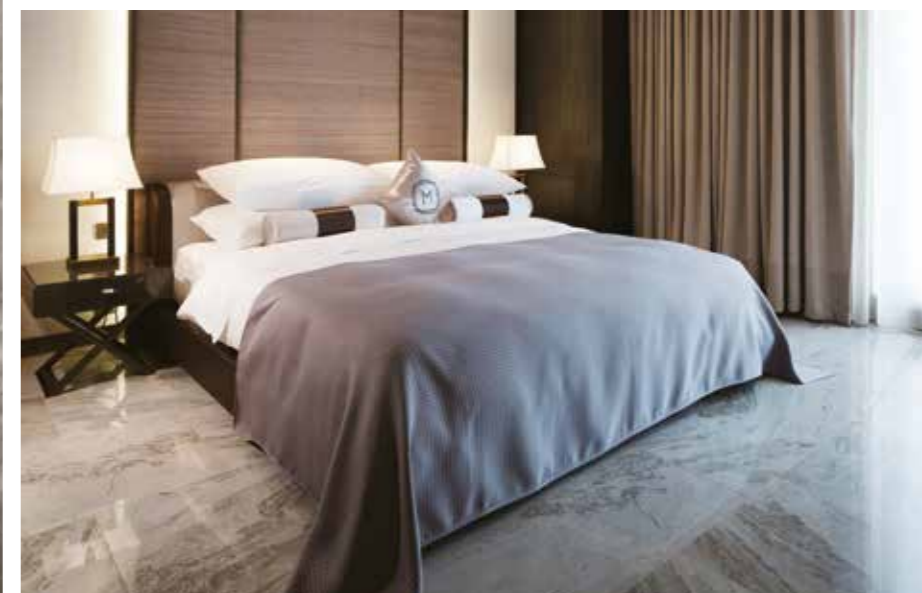
MADISON TAIPEI is located at a special spot where you can stroll along the Dunnan Boulevard and encounter the silhouette of the olive green. MADISON TAIPEI presents its tranquility in the midst of an urban city with its lush trees and chirping birds. Celebrities are attracted here because of its many unique privileges.





MADISON TAIPEI has 124 high-quality rooms and suites, with 6 different types of rooms. Exuding an aura of classic taste and elegance, MADISON TAIPEI attentively chooses its color tone, furniture and bedding, paying close attention to detail. Rare stone materials and neo-classical style furniture reflect a cozy atmosphere. A glass curtain was conceived by the designers to create an indoor and outdoor lighting effect. The simple linings are constructed using a natural concept, showing a supreme sense of beauty. Incorporating both traditional and modern elements, Skyline Suite demonstrates an exceptionally unique beauty. It is a simple, aesthetic environment equipped with excellent and comfortable TOTO products, which exemplifies the concept of "less is more". Along with the acclaimed TOTO's NEOREST series, MADISON TAIPEI represents exquisite life and a customer-oriented spirit, which parallels the products' reputation.

The perfect combination of the two not only emphasizes a refined aesthetic, but also brings together a dignified visual feeling.



Details
Country/Area TAIWAN
Category Hotel ****
Rooms 124
Designer Weimin Li
Product number
Toilet NEOREST CES9573,
CW923SGUR
Standing Urinals UW904H
Web www.madisontaipei.com



Banyan Tree Shanghai On The Bund rests in Shanghai's Northern Bund area. Set in a prime location along the Huangpu River, the resort brings sublime Bund views and an unhindered panorama of the famed Lujiazui. With incomparable scenery on both sides of the Huangpu River, the luxury of modern and classical elegance intergrates here. Banyan Tree Shanghai On The Bund becomes a new iconic landmark to the city due to its design and service concept. The reflection of the resort, which is in the shape of a clear crystal box on the river, forms a splendid contrast with the buildings on the Bund's skyline. In each details of the design concept, "the veranda of a peaceful heart" by Singaporean design company, LTW Designworks, the resort provides guests with an urban oasis.

As the first hotel offering full panoramic views for all suites and rooms in Shanghai, the hotel holds 130 rooms (including 24 suites), all of which are equipped with large landscape windows that overlook the unrivalled panoramic views of the Huangpu River. At the same time it echoes to the bustling and modern Pudong financial center.



Guest rooms are in natural styles that are designed in a simple and enchanting way. Bedroom, bathroom and cloakroom are divided clearly by sophisticated doors in a standard guest room. Wooden decorations on the background wall of the bedroom are designed in concise lines and of Chinese taste. The sunbath on the couch close to the window that looks down on the fascinating view of the river, is only available in Banyan Tree Shanghai On The Bund. And the space of the bathroom embraces modern art and bathing design. The elegant TOTO NEOREST presents a noble, extreme resort life. With its comfortable functions, your stay here becomes excellent and distinctive. Mellow, old-fashioned TOTO reinforced marble washbasins complete the general style within the entire space. With the unique round-shaped TOTO bathtub settled by the window with surrounding picturesque sceneries, a wonderful bathing experience starts now, both physically and spiritually.





Details
 Country/Area CHINA
 Category Hotel *****
 Owner Banyan Tree Hotel&Resort
 Rooms 130(including 24 suites)
 Interior designer LTW Designworks
 Product number
 Toilet NEOREST CES9683CS
 Bathtub PJY1820PWV1
 Lavatory PJS450WV1
 Web www.banyantree.com/zh/cn-china-shanghai-on-the-bund

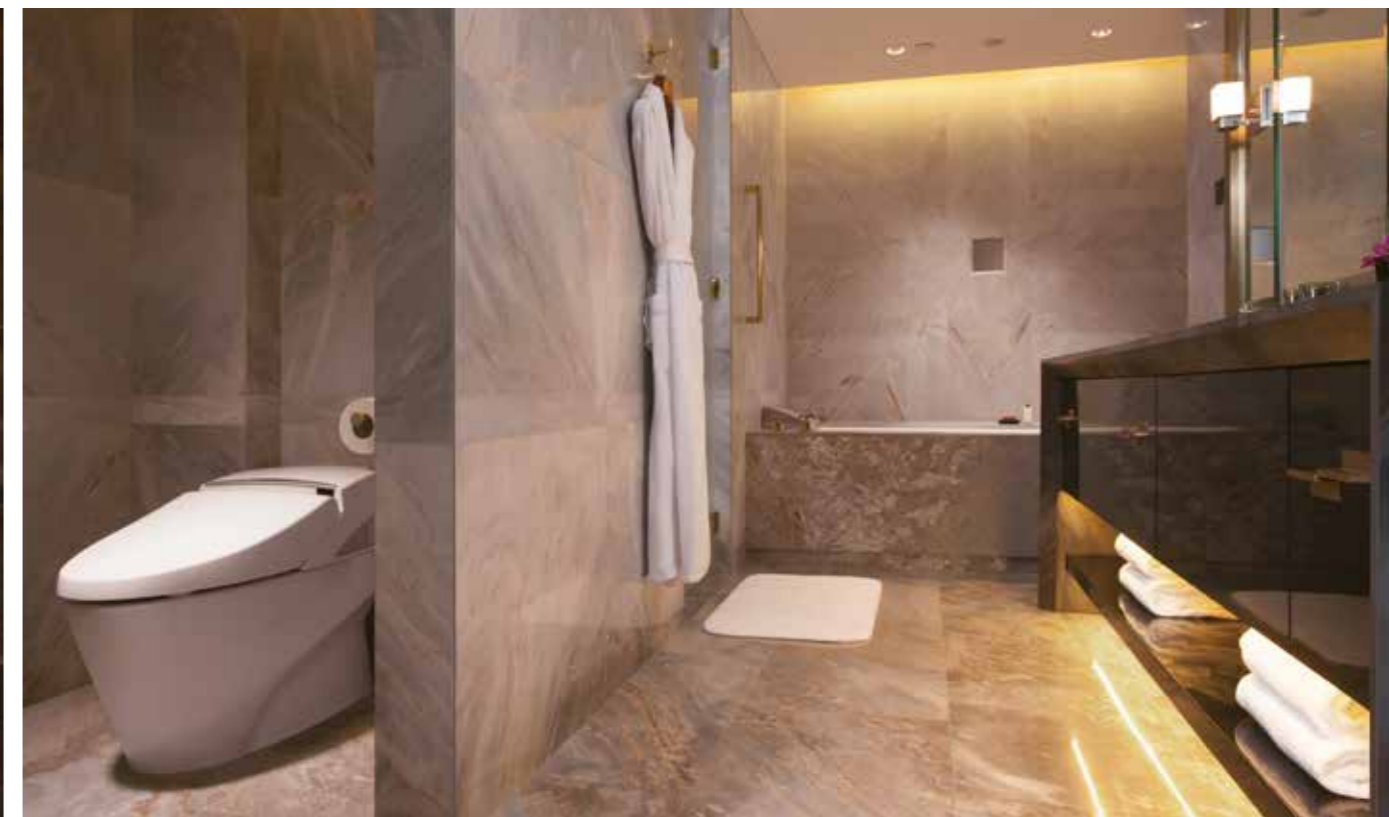


Waldorf Astoria Beijing is a landmark in the heart of the Wangfujing district, and an icon where time transcends through the rich Chinese tradition to today's sophisticated affluent lifestyle. Bronze is ornately used as a main element in the design concept of the whole hotel, offering a refined sanctuary in the downtown business district of Beijing. Due to its brilliant figure, the hotel looks gorgeous outside and inherits classical traditions because of its restrained luxury inside. The ancient atmosphere of Beijing and the historical sentiment is shown to the world in Waldorf Astoria Beijing .





The hotel features 171 luxuriously appointed guestrooms including 38 suites, 9 of which have furnished terraces in the main hotel tower. Each room is spacious with elegantly and thoughtfully designed separate living, work and resting areas. With its signature True Waldorf Service, the hotel exemplifies discreet personalized attention, creating unforgettable moments that add up to an extraordinary experience that can happen only at a Waldorf Astoria. Each room provides a generous residential environment amidst modern technology and exquisite amenities. For example, TOTO's NEOREST series offer guests unparalleled comfortable experiences with its many intelligent functions.





Details
Country/Area CHINA
Category Hotel *****
Owner Hilton Worldwide
Rooms 176
Product number
Toilet NEOREST CES9911CS
Web beijing.waldorfastoria.com



Chongqing, the beautiful mountain city, has more than three thousand years of history. Now it has its new landmark, The Westin Chongqing Liberation Square.





As the first Westin brand flagship hotel in the southwest of mainland China founded by Starwood Hotels & Resorts, the Westin Chongqing Liberation Square is ideally located in the central business district of Jiefangbei, which is close to Chongqing's most famous attractions. 336 well-designed guest rooms and suites are established over 34 floors, which sets a brand new height record for the mountain city. Overlooking the Yangtze River's scenic and bustling city panorama, the highest lobby with ten-meter ceilings and 360° panoramic views entice the guests. The Westin Chongqing Liberation Square offers seven enchanting dining restaurants and lounges that will delight even the most discriminating palates.

All rooms boast a range of excellent facilities including 40-inch LCD TVs with built-in speakers, excellent sound systems, fully automated curtains, bidets and the Westin's famous Heavenly® Bed. All of these create an ultra-comfortable space for all the guests. Especially in the bathroom, guests may enjoy a refreshing experience with TOTO NEOREST toilets and distinctive Washlets.





Details	CHINA
Country/Area	Hotel *****
Category	Starwood
Owner	336
Rooms	
Product number	
Toilet	NEOREST CES9683CS, NEOREST CES9911CS
Bathtub	FBY1700HP, FBY1764CHP
Lavatory	LW716B, LW161B, LS800CT1+HP800F, PJS02#GW
Web	www.westin.com/ chongqingliberationsquare

Under the Hilton worldwide's global luxury brand CONRAD® HOTELS & RESORTS, Conrad Beijing is strategically located in the Chaoyang District and enjoys close proximity to the Central Business District which is within walking distance. The stylish design and modern facilities of the hotel perfectly echo "The Luxury of Being Yourself", the mantra of the brand.





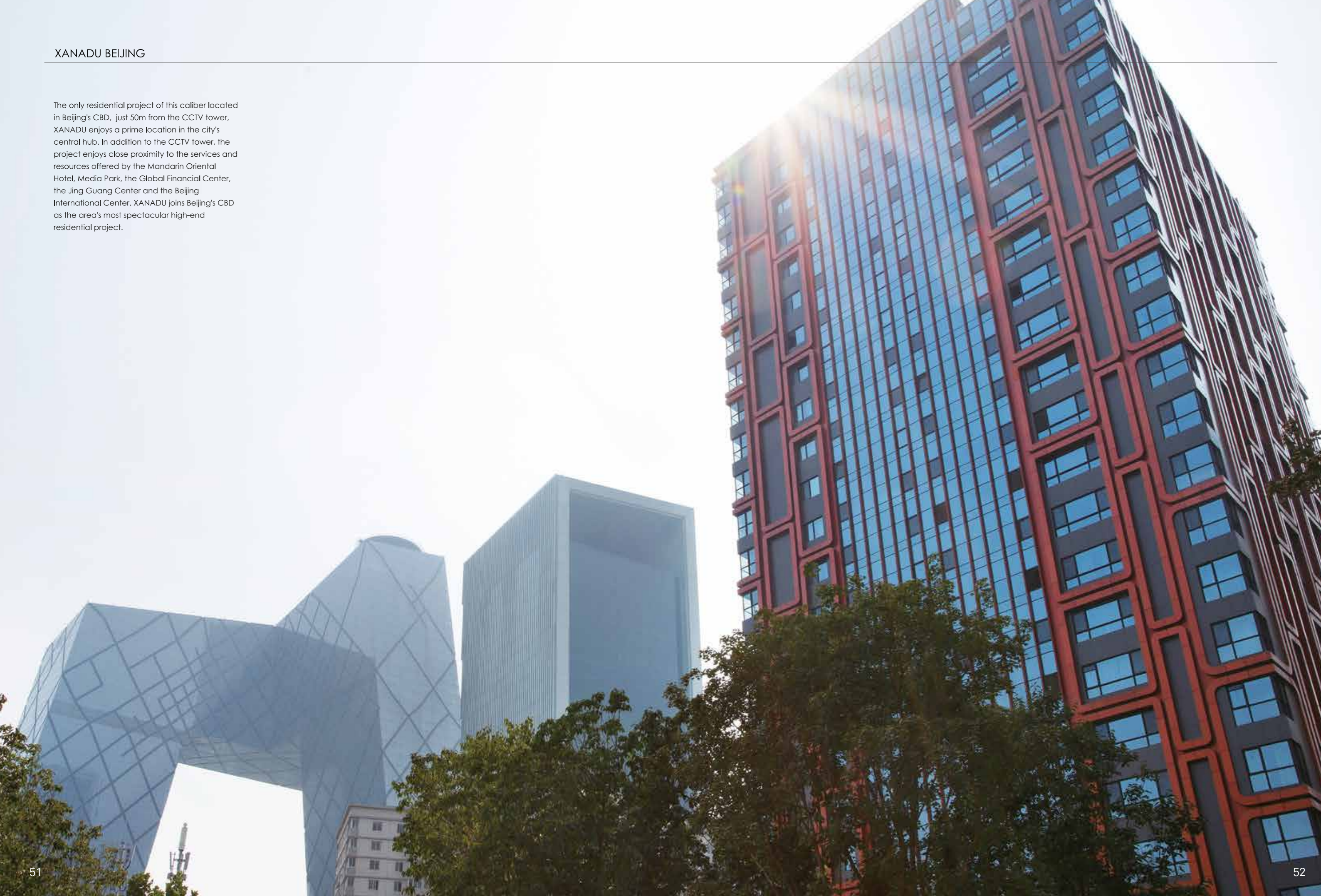
Conrad Beijing is a short drive away from Beijing's most famous attractions, including Tian'anmen Square, the Forbidden City and Temple of Heaven. The hotel's 289 spacious contemporary guest rooms with oriental influences including 17 Suites, feature three-meter floor-to-ceiling windows with picturesque views of Tuanjie Lake Park, the iconic CCTV building and the captivating Beijing skyline. Dramatic, clean, sweeping lines and stylish design at every exquisite view are accented with beautiful artwork and energized public spaces. The guest rooms provide desired convenience and comfort with functional facilities. A sense of calm comes from the neutral colored design and the floor-to-ceiling windows let people enjoy the magnificent scenery of Beijing. The room boasts a range of luxurious and smart facilities including a Nespresso coffee machine, 400 thread-count luxury bed linens, a 46-inch flat screen TV and an iHome docking station. Guests may enjoy a home-like lavatory experience in the bathroom of the presidential suites which are equipped with TOTO's Neorest Toilet and Washlet.





Details	
Country/Area	CHINA
Category	Hotel *****
Owner	CONRAD® HOTELS & RESORTS
Rooms	289
Product number	
Toilet	NEOREST CES9911CS, CW923B
Washlet	TCF491CS
Lavatory	LW596RB
Web	www.conrad.hilton.com.cn/BJSCICI

The only residential project of this caliber located in Beijing's CBD, just 50m from the CCTV tower, XANADU enjoys a prime location in the city's central hub. In addition to the CCTV tower, the project enjoys close proximity to the services and resources offered by the Mandarin Oriental Hotel, Media Park, the Global Financial Center, the Jing Guang Center and the Beijing International Center. XANADU joins Beijing's CBD as the area's most spectacular high-end residential project.





The only residential community in the CBD designed with an enclosed inner courtyard, XANADU creates a truly exclusive domain for its residents. The apartment towers are positioned at various angles, providing residents with courtyard views and vistas of the surrounding downtown area and the iconic CCTV building. The building's own facade, meanwhile, is inspired by Chinese elements, adding warm, human hues to the CBD's architectural landscape, which is dominated by grey and other cool colors. Inside, several rooms are equipped with TOTO's NEOREST toilets, which also add a taste of intelligence.

Details	
Country/Area	CHINA
Category	Apartment
Product number	
Toilet	NEOREST CES994WCS





When people think of Hainan Island—China's southernmost province known as "the Hawaii of China"—they think of Sanya and Yalong Bay. This five-mile long, crescent-shaped sandy strip overlooking the South China Sea is the island's most popular destination, with no less than 20 hotels straddling its length and sharing the same beach.

As with all Park Hyatt hotels, location is paramount. Thus, for the new Park Hyatt Sanya Sunny Bay Resort, it is important to offer guests accessibility to this vibrant strip of bars and restaurants while maintaining the luxury of privacy and exclusivity. The property has therefore sequestered a private corner of Yalong Bay all to itself: a secluded inlet named Sunny Bay, a mere 5 km (3.1 mile) drive from Yalong Bay proper. In addition, the resort has also acquired Baifu (Fortune) Bay—a private bay right next to Sunny Bay, which is renowned for having the best dive conditions in China. The entire area is recognized by nature-protection organisations as a national soft-coral preserve.



Park Hyatt Sanya Sunny Bay Resort was created by the award-winning Belgian architect Jean-Michel Gathy of the renowned design-consultancy firm Denniston. The strikingly modernist development comprises six standalone, arch-shaped buildings designed to allow chi to flow unhindered between ocean and mountains. Set amid lush landscaping, every building and internal space has been carefully considered to maximise guests' enjoyment of the breathtaking views. The six buildings are interlinked by wide walkways, furnished and decorated with paintings and sculptures to create multiple miseenscène, offering a tranquil, rarefied art-walk experience.

With only 207 rooms and villas across the 70,000sqm (753,474sqft) property-few for a development of this size-guests could spend a holiday at Park Hyatt Sanya Sunny Bay Resort and feel as if they have the resort to themselves. However, when service is desired, it will be prompt and of a premium standard: warm, discreet, attentive, intuitive and tailored to guests' individual needs.

The room structure at Park Hyatt Sanya Sunny Bay Resort is simple: 28 Park Rooms with balconies, 136 Ocean View Rooms, 25 Park Suites, a Chairman Suite and 17 Park Villas. Almost all the guestrooms enjoy breathtaking beach and ocean views from panoramic windows stretching from one side of the room to the other, further extended by perpendicular mirrored glass at one side, creating the impression of a 270-degree view.





Details
Country/Area CHINA
Category Hotel&Resort
Rooms 207
Product number
Toilet NEOREST CES9683
Web <http://www.sanya.park.hyatt.com/zh-Hans/hotel/home.html>

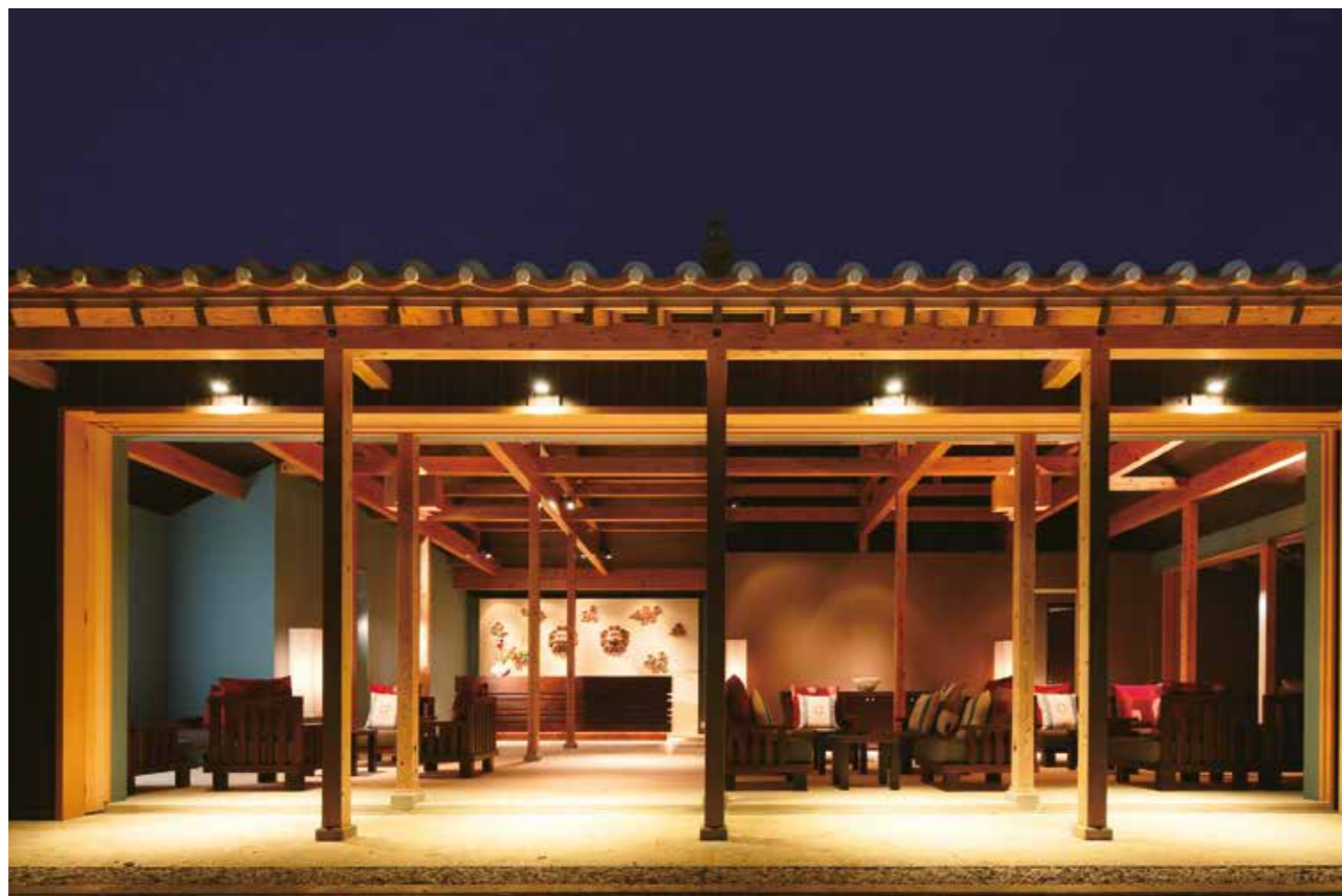


With its brand concept, "authentic Japan with modern comfort", this is Japan's top boutique resort hotel, a different place to experience traditional charm and local unique values. It keeps Okinawa's original style and street scenes on Taketomi, Okinawa. Hoshinoya Okinawa provides "non-routine" leisure time by blending modern comfort with Taketomi, where the historic scenes, life and culture are still maintained.





The resort covers over 6 acre. It is overall a village. You can have a rest on all facilities here, from private garden, thin and long sandy roads, small wayside fields, open swimming pool, dense forest, to broad gazebos, which are parts of the nature on the island. Wish Hoshinoya Okinawa the first station for you to experience the charm of the island.





Details
Country/Area JAPAN
Category Hotel&Resort
Owner Hoshino Resort
Design AZUMA ARCHITECT & ASSOCIATES
studio on site

Product number
Toilet NEOREST Toilet series
Web <http://www.xingyejituan.com/hoshinoya/okinawa/concept/index.html>

Tokyo downtown area witnesses the miniature of the history of the city for nearly 100 years. In autumn of the year 2012, The Tokyo Station Hotel and Tokyo Station embraced its new birth. This is Redbrick Railway Station as the national key cultural heritage, it is also the hotel favored by literary giants. It not only remains the traditional style left from the Taisho Period, But also is equipped with the functions of modern hotel, which can provide special service for customers. We will provide unique life style for customers at home and abroad. The Tokyo Station Hotel, make efforts to create a hotel inheriting hundred-year-old history in the past, and continuing hundred-year-old legend in the future.





For The Tokyo Station Hotel, building and customers are huge wealth. Buildings shown in the form of silhouette not only express the aspect as national designated key cultural heritage, but also demonstrate the charm of people's livelihood in people's life. This is unique brand logo only available in The Tokyo Station Hotel. When windows are illuminated with lights, Tokyo Railway Station is painted with a layer of "deep blue color". The deep blue color is a kind of traditional color in Japan representing the moment of tonight, which is perfectly matched to the color of red bricks. It highlights the modern sense and the artistic style. The bustling railway station where numerous passengers come and go is changed to The Tokyo Station Hotel with 150 guestrooms. Time is also decorated with infinite charm at this moment.





Details
Country/Area JAPAN
Category Hotel *****
Product number
Toilet NEOREST Toilet series
Web www.thetokystationhotel.jp

Located in the center of Tokyo at 1-1-1 Marunouchi in Chiyoda-ku, Palace Hotel Tokyo marked its grand opening on May 17, 2012. The floor-to-ceiling windows of the guestrooms deliver a commanding view of the surrounding nature. Reconstructed from the original Palace Hotel with a history of over 50 years, the property consists of two buildings as before - the hotel and the office building. What was formerly a 10-storey building with 389 guestrooms was reborn to have 23-stories with 290 spacious guestrooms. Palace Hotel Tokyo also features 10 restaurants and bars, 8 function rooms, a wedding chapel, an evian SPA and more.





Photo by PALACE HOTEL TOKYO



Photo by PALACE HOTEL TOKYO

The bathrooms in Deluxe Rooms are set close to the entrance of the room, with independent toilets and shower cubicles. The bathtub and bedroom area are divided by an L-shaped glass wall, which allows guests to look out through the room to the balcony, and to the Wadakura Fountain Park scenery beyond.

Electrically-powered window shades are set up on the L-shaped glass wall, and a sliding door is also equipped between the bathroom and bedroom to ensure privacy when the guest wishes.

Grand Deluxe Rooms feature bathrooms with a separate shower and soaking tub set beside the window, providing views of the gardens outside. Due to the unique curved architectural appearance of the hotel, the bathtub is designed at the position with the best perspective. The panoramic view of the surrounding beautiful scenery that you see as you lie in the bathtub will make you feel relaxed and happy.



Photo by PALACE HOTEL TOKYO



Photo by PALACE HOTEL TOKYO



Photo by TOTO通信



Photo by TOTO通信



Photo by TOTO通信



Photo by TOTO通信

Details
 Country/Area JAPAN
 Category Hotel *****
 Opened 2012
 Rooms 290
 Product number
 Toilet NEOREST D(special type)
 Bathtub bathtub(special type) 、
 cast iron bathtub (special type)
 Faucet s series special type、
 wall hanging type sensing faucet
 Others special type RESTROOM ITEM01
 Web www.palacehoteltokyo.com



Seated majestically one of the world's most beautiful harbours, Park Hyatt Sydney is located in the historic Rocks area within walking distance to Sydney's vibrant business, dining and entertainment precincts. Most of the 155 guestrooms and suites including three rooftop suites offer private balconies that overlook of the world-famous Sydney Opera House and Harbour Bridge. Unrivalled views, private boat access and a dedicated butler service provide discerning travellers a quintessential Sydney experience.





Details	
Country/Area	Australia
Category	Hotel ****
Owner	Daisho Developments Australia
Rooms	155
Product number	
NEOREST	NEOREST LE
Washlet	TCF891G
Toilet	CW762B
Web	sydney.park.hyatt.com

Rosewood London, opened in October 2013 after a sensitive transformation of a 1914 Edwardian, Grade II-listed building on High Holborn. Combining English heritage with contemporary sophistication, the capital's newest luxury hotel marks the exciting presence of the Rosewood Hotels & Resorts® brand in Europe.





Moments from Covent Garden, Rosewood London is located in one of the capital's most historic yet dynamic locales, a stone's throw from the eclectic array of ultra-luxury boufiques on Lamb's Conduit Street, the Royal Opera House, the British Museum and West End Theatres. The hotel offers 262 rooms and 44 suites, impeccably designed with the feel of a true London residence. The hotel also includes the Grand Manor House Wing - located in a private wing of the hotel, consisting of six guestrooms measuring an unrivalled 6,318 sq., a private entrance and elevator and its very own postcode. The luxurious finishes offered in both the hotels the Grand Manor House Wing and Garden House Suite extends into the multiple bathrooms available, whereby TOTO's Neorest LE Washlet has been used.





Details
 Country/Area UK
 Category Hotel *****
 Owner Rosewood Hotels & Resorts
 Year built 2013
 Rooms and suites 262 rooms and 44 suites.
 Product number
 Toilet TOTO installed the NEOREST
 LE WASHLET CW998CH in
 both the Grand Manor
 House Wing and the Garden
 House Suite
 Web [www.rosewoodhotels.com/
london](http://www.rosewoodhotels.com/london)



Buddha Bar Hotel, owned by George V Entertainment Group, is located in a stunning building in the heart of Faubourg Saint Honoré.





Raymond Visan developed the concept for the hotel, and wanted it to be completely unique. It was designed to bring the sensual aspects of Asian wellness traditions to the prestige of the French hotel business. With 56 spacious rooms, including 19 suites, all in black and yellow gold, the BBH is a luxurious, comfortable oasis with a warm, exclusive atmosphere. The hotel designers decided to install a TOTO WASHLET in each room and suite. The Giovannoni model from TOTO unites European design with Japanese expertise – yet another way in which Asia meets Europe at this fine hotel. BBH also has a wellness room and a hammam, where guests can relax and rejuvenate their bodies and spirits in line with Asian tradition. The Giovannoni WASHLET is also found here.



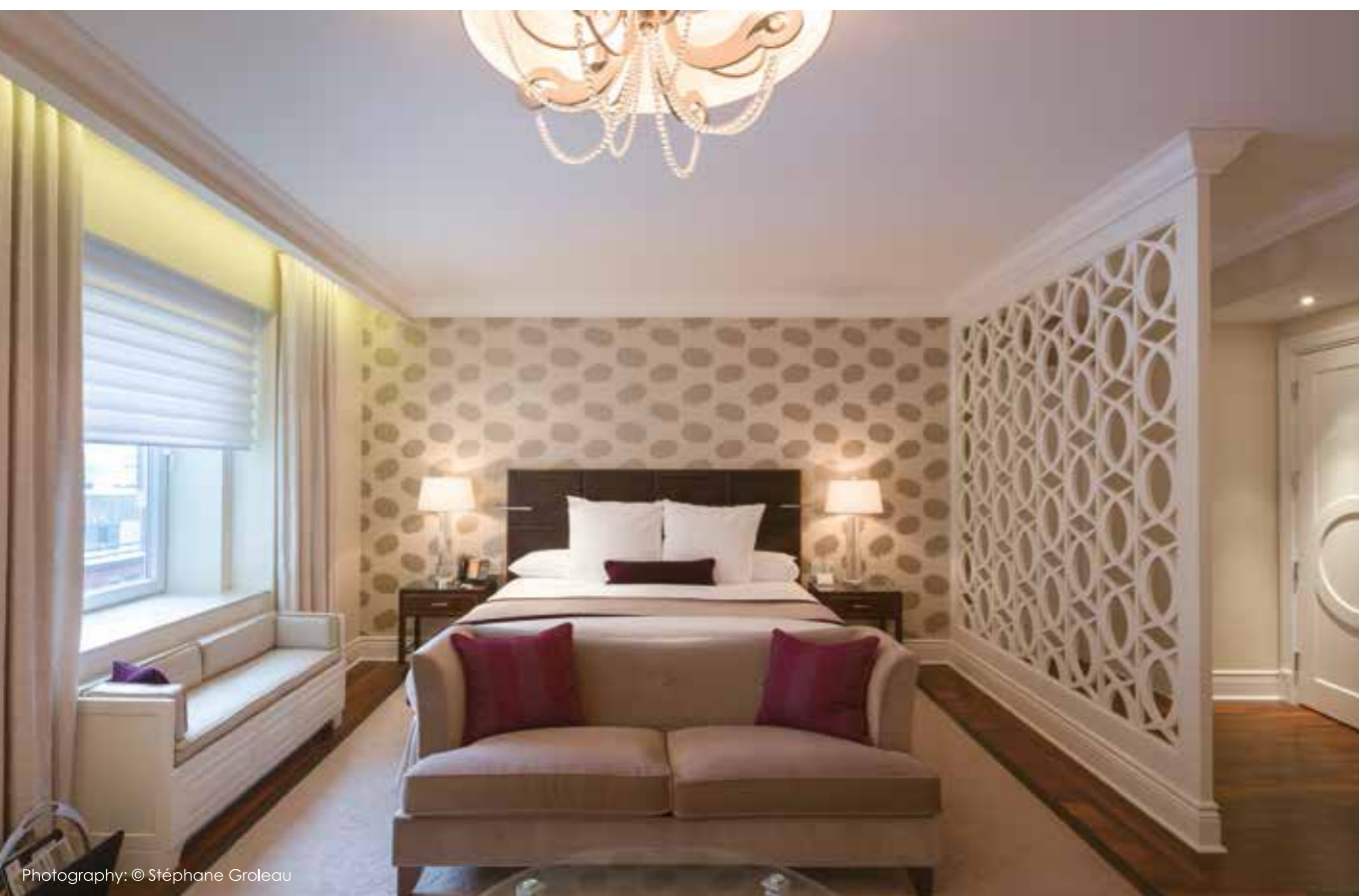
Details
Country/Area France
Category Hotel *****
Owner George V Eatertainment
Rooms 56
Product number
Toilet Giovannoni WASHLET
Web www.buddhabar.com/en/hotels-et-resorts-buddhabar-hotel-paris-2



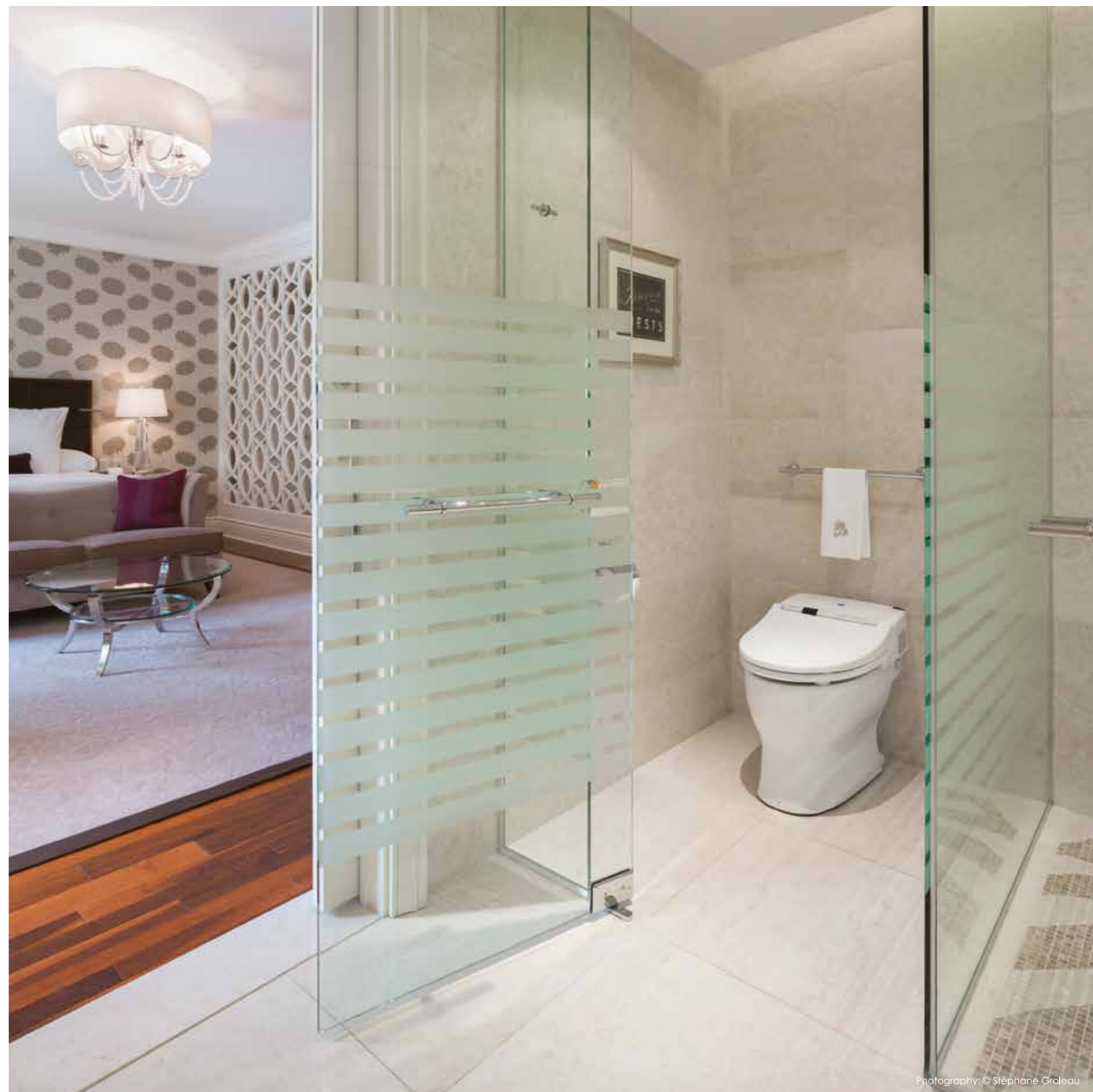




When it opened its doors in 1912, the Ritz-Carlton Montreal set a new standard for luxury. Today, more than 100 years later, the Grande Dame of Sherbrooke Street blends its historic splendor with contemporary design, offering an unparalleled hotel experience in the heart of downtown. The only Quebec hotel to hold the prestigious AAA Five Diamond, the Ritz-Carlton Montreal offers guests with boutique hotel accommodations. Guests also enjoy fine dining and experience the tradition of Afternoon Tea at this historic hotel, and the rooftop terrace features an indoor saltwater pool with stunning views overlooking the city. TOTO Neorest 500 is featured in all 129 rooms and suites to offer guests with ultimate comfort.



Photography: © Stéphane Groleau



Photography: © Stéphane Groleau



Photography: © Stéphane Groleau

Details	
Country/Area	CANADA
Category	Hotel *****
Opened	1912
Rooms	129
Product number	
Toilet	Neorest 500
Web	http://www.ritzcarlton.com/en/Montreal



Photography: © Stéphane Groleau





Copyrights: Robb Report Home & Style,
The photographer: Meghan Beierle-O'Brien



Copyrights: Robb Report Home & Style,
The photographer: Meghan Beierle-O'Brien

A collaboration between the Fairmont Miramar Hotel and Bungalows of Santa Monica, Calif., and Robb Report Home & Style magazine, the new Bungalow One connects four bungalows to create a 2,500-square-foot, three-bedroom retreat that melds modern-day amenities with classic and casual beach elegance. With on-site luxury-hotel services and a poolside terrace, Bungalow One can serve as an exclusive retreat for overnight guests or a VIP event space that simultaneously satisfies the needs for publicity and privacy. The Southern California-based designer Michael Berman took a low-key tack with the high-end lodging's design. "I wanted this to be more like staying in a personal guest home of a really great beach house" says Berman of the comfortably appointed bungalow, "I wanted it to feel luxurious, but not necessarily formal or opulent." Not to be outdone, TOTO delivers the definitive state-of-the-art indulgence to that most basic of bathroom fixtures—the WC. The Jasmin Washlet toilet seat doubles as a mini bidet, with front and rear warm water sprays that can be regulated—via remote control—for preferred water pressure, temperature, and massage. It even has a warm air dryer and seat warmer.



Copyrights: Robb Report Home & Style,
The photographer: Meghan Beierle-O'Brien



Copyrights: Robb Report Home & Style,
The photographer: Meghan Beierle-O'Brien



Copyrights: Robb Report Home & Style,
The photographer: Meghan Beierle-O'Brien



Copyrights: Robb Report Home & Style,
The photographer: Meghan Beierle-O'Brien



Copyrights: Robb Report Home & Style,
The photographer: Meghan Beierle-O'Brien

Details
 Country/Area USA
 Category Bungalow
 Designer Michael Berman
 Product number
 Toilet CST494CEMFG#01
 Bathtub FBF794S#01CP
 Lavatory LT491G#01
 Faucet Connolly™ series
 Web <http://robbreport.com/bungalow-one>

BRUSHSTROKE RESTAURANT

A joint venture between Chef David Bouley and Japan's top culinary school, The Tsuji Culinary Institute, Brushstroke offers a brilliant modern interpretation of kaiseki cuisine. Based entirely around tasting menus that change seasonally, kaiseki uses French ingredients to build a progression of flavors and sensations, with courses designed to be beautiful, delicious and surprising. Situated in the heart of Tribeca district of New York City, Brushstroke continues to indulge its patrons with the exceptional food and impeccable dining experience.





TOTO Neorest provides the guests with delightful comfort at this Michelin-starred restaurant.

Details
Country/Area USA
Category Restaurant
Product number
Toilet NEOREST 500
Address 30 Hudson St., New York, NY 10013
Tel 001+212-791-3771
Web <http://www.davidbouley.com/brushstroke>

