

### RENESSE Single Lever Lavatory Faucet (w/ Pop-up Waste)



## Features

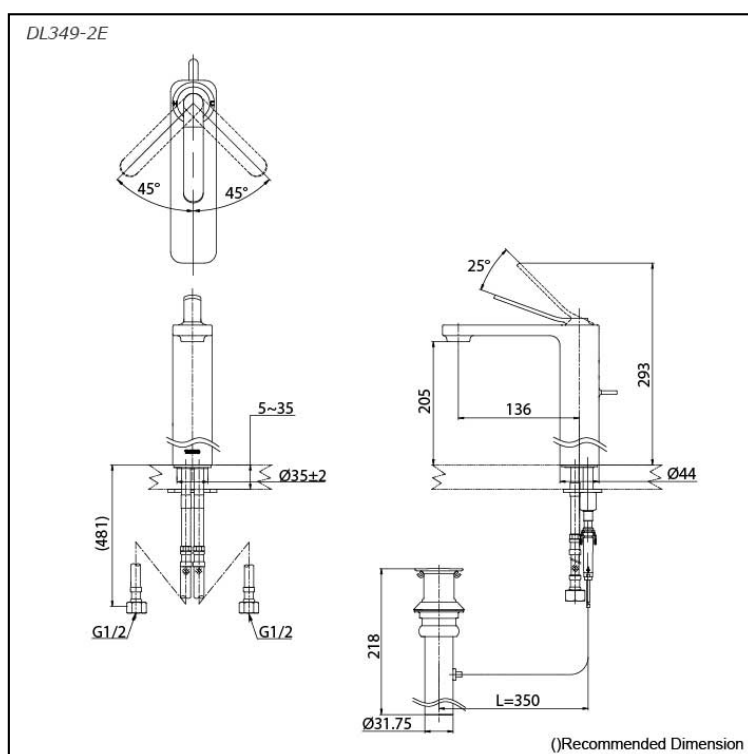
- Stylish design for RENESSE Suite
- TOTO aerated water technology, ECOCAP adds air to the water to achieve full water jet with less amount of water usage
- Smooth Operation with lever type

## Specifications

Finish: Nickel Chrome  
Material: Brass  
Water Pressure: 0.05MPa~0.75MPa

## Parts description

- **DL349-2E**  
Single Lever Lavatory Faucet  
(w/ Pop-up Waste)



Flow Rate

DL349-2E

