

Alisei WALL HUNG TOILET



Features

- Unique sculpted design, Wall Hung Toilet
- Wall Hung types, easy cleaning
- TORNADO FLUSH for powerful flushing effect with less amount of water
- CEFIONTECT technology: super smooth, ion barrier glaze for a clean toilet bowl
- RIMLESS DESIGN bowl ensures easy cleaning and ultimate hygiene
- WATER SAVING

Specifications

Flush system:	TORNADO FLUSH
Water Use:	4.5L / 3L
Rough-in:	H=220 mm
Bowl Shape:	Elongated
Water Pressure:	0.05MPa~0.75MPa
Size:	404Wx590Dx330H mm

Parts description

Seat & Cover is **not included**.

- **CW274JWS**
Elongated Wall Hung Closet Bowl w/
Invisible Fixing Kit (P-Trap) (Rough-in 220)

Optional Parts

- WH132AUDHF
Concealed Cistern w/ Half Frame
- TC273SJ
Soft close Seat & Cover
- MB174P
Flush Panel

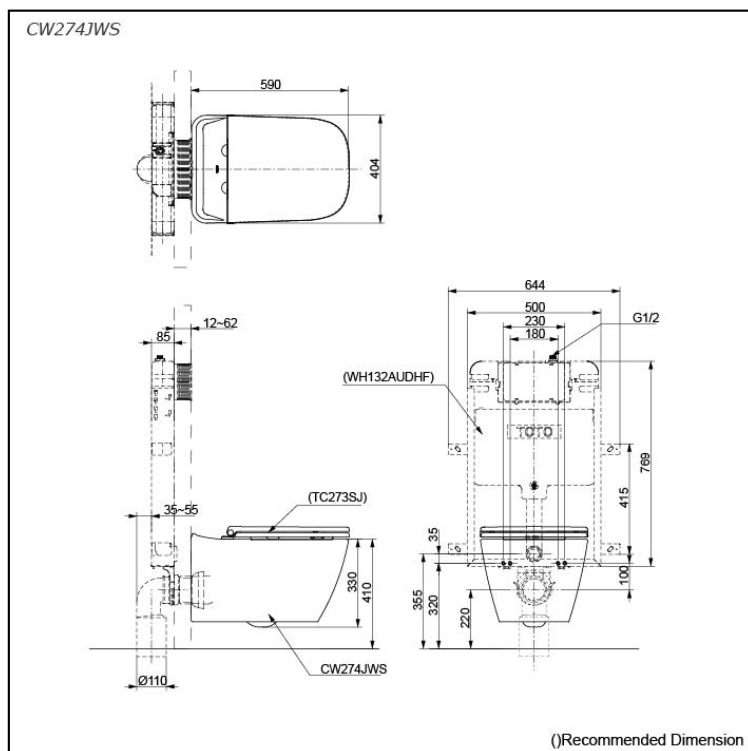
NOTE

- **DO NOT COUPLE THIS WC WITH FLUSH VALVE**

Colors

White

Certifications



()Recommended Dimension