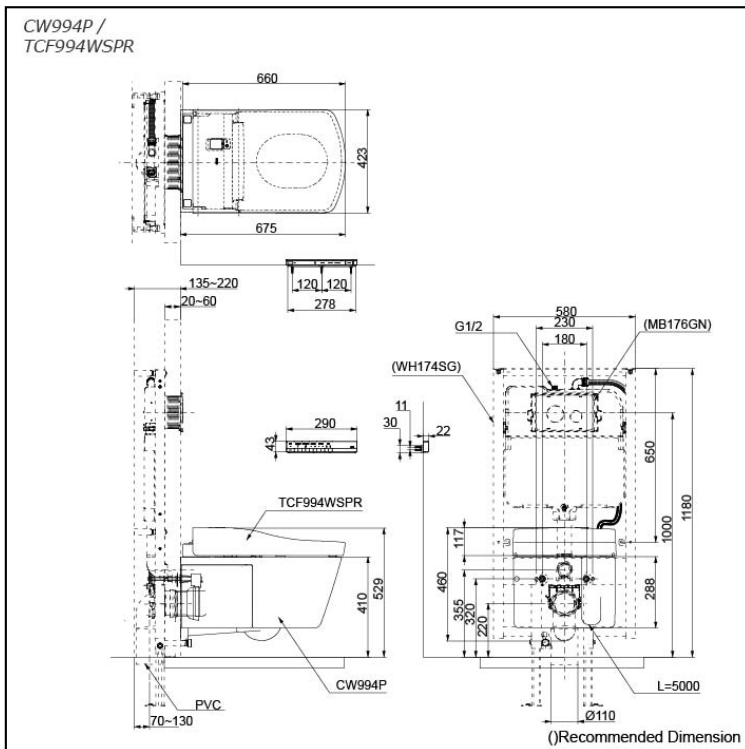


### NEOREST LE I Wall Hung Smart Toilet



## Features

- Luxury, elegant and seamless design
- TORNADO FLUSH for powerful flushing effect with less amount of water
- Integral WASHLET features front and rear warm water washing
- EWATER+ keeps toilet bowl and nozzle clean by preventing bacteria with sanitizing effect
- Automatic operation: Lid opens, closes and toilet flushes when sensor is activated
- Auto soft light function usable for night time usage

EWATER+, highly effective sanitizer created by electrolyzed chloride ion in tap water. After use, it returns back to original state, environmental friendly

## Specifications

Flush system:	TORNADO FLUSH
Water Use:	4.0L / 3.0L
Rough-in:	H=220 mm
Water Pressure:	0.05MPa~0.75MPa
Power Rating:	220~240V, 50/60Hz, 839~849W
Length of Power Cord:	1.0 m
Size:	423Wx675Dx460H mm

## Parts description

WASHLET included

- **CW994P**  
Water Closet Bowl (P-Trap)  
(Rough-in 220)
- **TCF994WSPR**  
WASHLET Unit

Optional Parts

- WH174SG  
Concealed Cistern w/Frame
- MB176GN  
Flush Panel

## Colors

White (CEFIONTECT)

## Certifications

