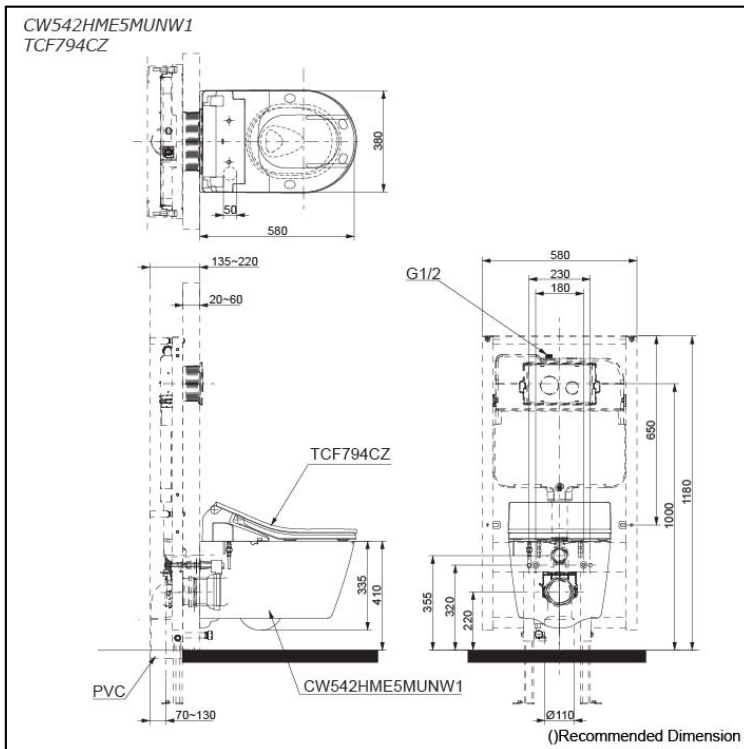


WALL HUNG TOILET with
WASHLET RX



Features

- CEFIONTECT Technology: super smooth, ion barrier glazing for a clean toilet bowl
- TORNADO FLUSH for powerful flushing with less amount of water
- RIMLESS DESIGN bowl ensures easy cleaning and ultimate hygiene
- EWATER+ keeps nozzle clean with sanitizing effect against bacterial
- Fully equipped with rear, front and oscillating & pulsating cleansing function
- Temperature control HEATED SEAT
- PREMIST a fine spray of mist making it difficult for dirt to adhere
- Soft closing seat and cover

EWATER+ is made from tap water by electrolyzed chloride ion. After use, it returns back to ordinary state of water

Specifications

BOWL:

Flush System: TORNADO FLUSH

Water Use: 4.0L / 3.0L

Rough-in: H=220

Bowl Shape: D-Shape

Water Pressure: 0.05MPa~0.75MPa

Size: 380W x 580D x 335H mm

WASHLET:

Power Rating: 220~240V , 50/60Hz , 826~837W

Length of Power Cord: 0.9 m

Size: 383W x 579D x 146H mm

Parts description

Stop Valve is included.

- **CW542HME5MUNW1**
D-Shape Wall Hung Closet Bowl (P-Trap) with Concealed feature, hiding all wiring inside the bowl
- **TCF794CZ**
Concealed WASHLET RX

NOTE

- **DO NOT COUPLE THIS WC WITH FLUSH VALVE**

Colors

White