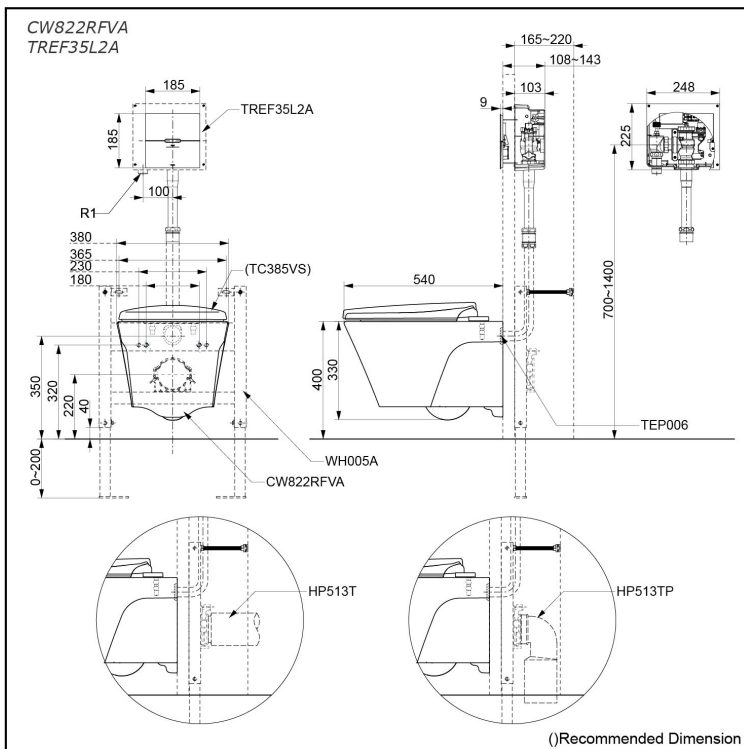


## WALL HUNG TOILET with CONCEALED TOILET SENSOR FLUSH VALVE



## Features

- Automatic flush enables Hands-free usage, increasing hygiene
- Push button - Enable users to flush manually
- Constant Flow Valve for stable flow volume and performance, easy to install
- LED Indicator to reflect different stages.
- TORNADO FLUSH for powerful flushing effect with less amount of water
- CEFIONTECT technology: super smooth, ion barrier glaze for a clean toilet bowl
- RIMLESS DESIGN bowl ensures easy cleaning and ultimate hygiene

## Specifications

### SENSOR FLUSH VALVE:

Cover Size:	185W x 9D x 185H mm
Water Pressure:	0.1MPa~0.75MPa
Flow Rate:	80L/min (Constant Flow Valve)
Flush Volume:	4.5L / 3.0L
Power Supply :	AC 220V Operated
Material:	Bronze (Valve) Stainless steel (Panel)

### BOWL:

Flush system:	TORNADO FLUSH
Rough-in:	H=220 mm
Bowl Shape:	Elongated
Size:	380Wx540Dx330H mm

## Parts description

- **CW822RFVA**  
Elongated Wall Hung Closet Bowl (EFV compatible)
- **TREF35L2A**  
Concealed Toilet Sensor Flush Valve w/ Box (AC 220V Operated)
- **TEP006**  
Inlet Gasket

### Optional Parts

- WH005A  
Concealed Frame
- TC385VS  
Soft Seat & Cover
- HP513T  
Flush Straight Pipe w/ Socket
- HP513TP  
Flush Elbow Pipe w/ Socket

### NOTE

- Not to be combined with concealed tank
- Not to be combined with other flush valves