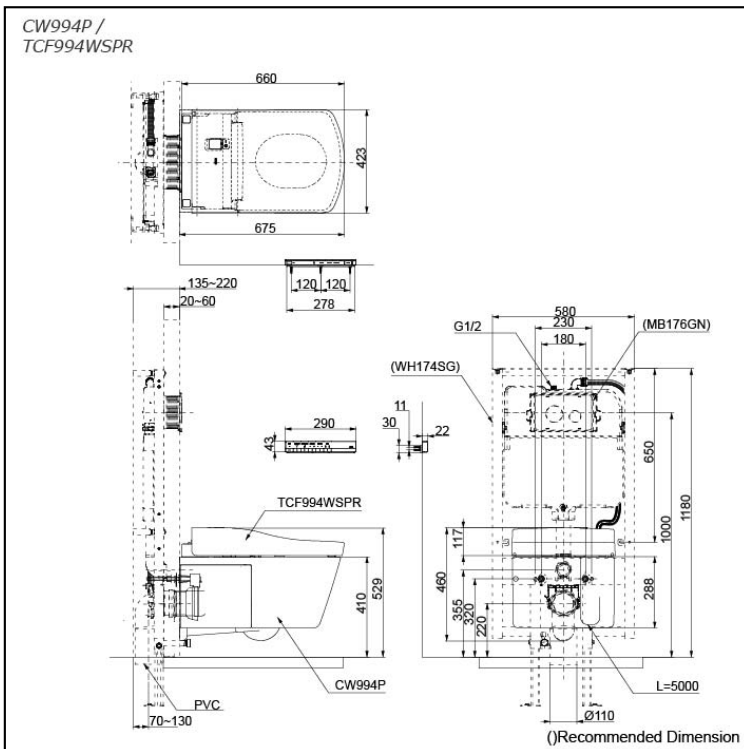


NEOREST LE I Wall Hung Smart Toilet



Features

- Luxury, elegant and seamless design
- TORNADO FLUSH for powerful flushing effect with less amount of water
- Integral WASHLET features front and rear warm water washing
- EWATER+ keeps toilet bowl and nozzle clean by preventing bacteria with sanitizing effect
- Automatic operation: Lid opens, closes and toilet flushes when sensor is activated
- Auto soft light function usable for night time usage

EWATER+, highly effective sanitizer created by electrolyzed chloride ion in tap water. After use, it returns back to original state, environmental friendly

Specifications

Flush system:	TORNADO FLUSH
Water Use:	4.0L / 3.0L
Rough-in:	H=220 mm
Water Pressure:	0.05MPa~0.75MPa
Power Rating:	220~240V, 50/60Hz, 839~849W
Length of Power Cord:	1.0 m
Size:	423Wx675Dx460H mm

Parts description

WASHLET included

- **CW994P**
Water Closet Bowl (P-Trap)
(Rough-in 220)
- **TCF994WSPR**
WASHLET Unit

Optional Parts

- WH174SG
Concealed Cistern w/Frame
- MB176GN
Flush Panel

Colors

White (CEFIONTECT)

Certifications

