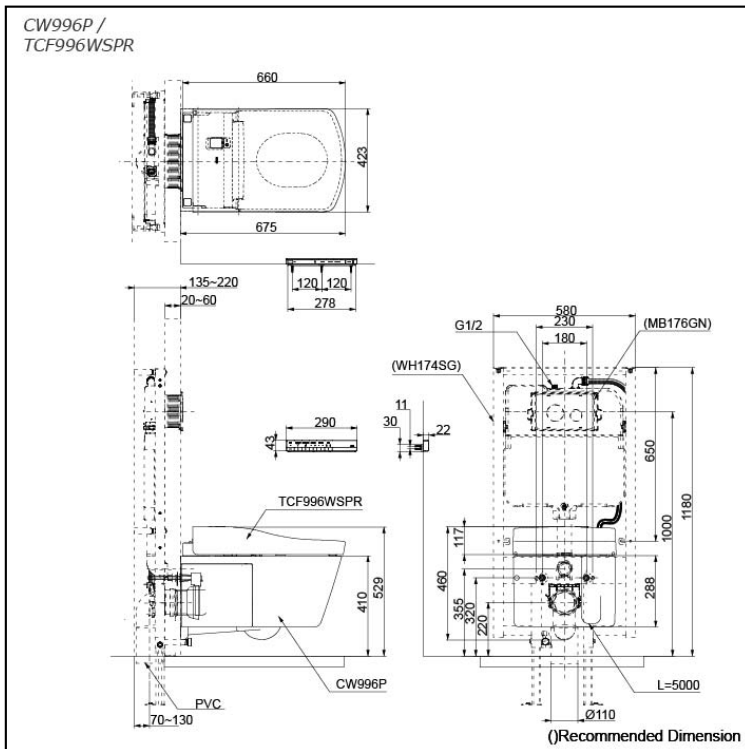


#### NEOREST LE II Wall Hung Smart Toilet



Neorest LE II carrying innovative Actilight Technology



## Features

- Luxury, elegant and seamless design
- Revolutionary technology, ACTILIGHT, ridding both visible and invisible waste
- TORNADO FLUSH for powerful flushing effect with less amount of water
- Integral WASHLET features front and rear warm water washing
- Automatic operation: Lid opens, closes and toilet flushes when sensor is activated
- Auto soft light function usable for night time usage

ACTILIGHT, cutting-edge technology. Photocatalytic glaze with UV light fired onto the bowl that breaks down microscopic waste particles

## Specifications

Flush system:	TORNADO FLUSH
Water Use:	4.0L / 3.0L
Rough-in:	H=220 mm
Water Pressure:	0.05MPa~0.75MPa
Power Rating:	220~240V, 50/60Hz, 839~849W
Length of Power Cord:	1.0 m
Size:	423Wx675Dx460H mm

## Parts description

WASHLET included

- **CW996P**  
Water Closet Bowl (P-Trap)  
(Rough-in 220)
- **TCF996WSPR**  
WASHLET Unit

Optional Parts

- WH174SG  
Concealed Cistern w/Frame
- MB176GN  
Flush Panel

## Colors

White (CEFIONTECT)

## Certifications

