

TOJA WALL HUNG TOILET



Features

- Sleek skirted design with concealed trapway for easy cleaning
- Dual flush system
- Wall hung type, easy cleaning

Specifications

Flush system:	Wash Down
Water Use:	4.5L / 3L
Rough-in:	H=220 mm
Bowl Shape:	Elongated
Water Pressure:	0.05MPa~0.75MPa
Size:	365Wx595Dx351H mm

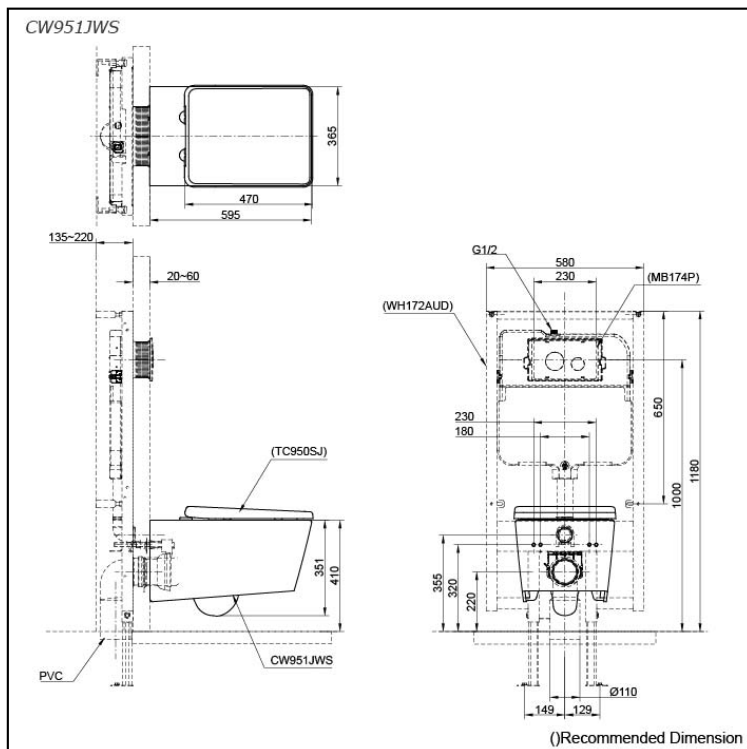
Parts description

Seat & Cover is **not included**.

- **CW951JWS**
Elongated Wall Hung Closet Bowl (P-Trap)
(Rough-in 220)

Optional Parts

- WH172AUD
Concealed Cistern w/Frame
- WH142AUD
Concealed Cistern w/Frame
(Low Type)
- TC950SJ
Soft Close Seat & Cover
(Urea Resin)
- MB174P
Flush Panel



Colors

White

Certifications

